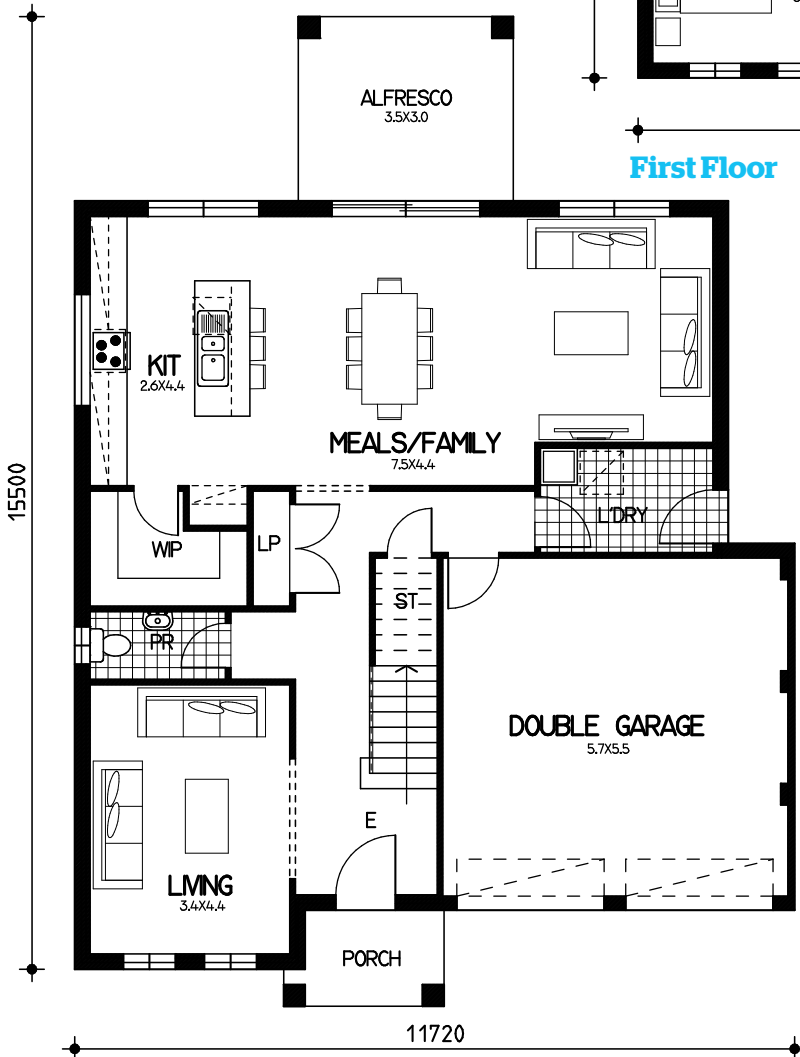
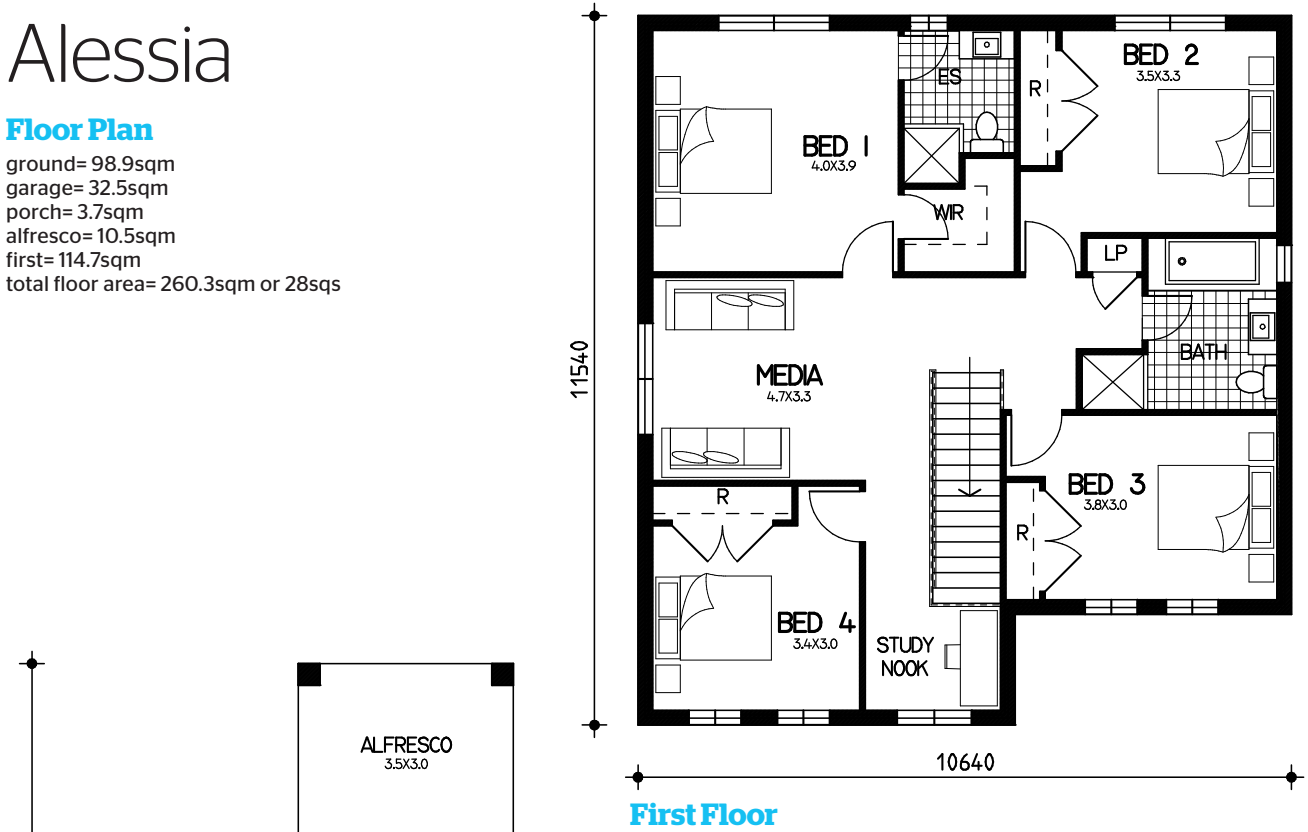


Alessia

Floor Plan

ground= 98.9sqm
 garage= 32.5sqm
 porch= 3.7sqm
 alfresco= 10.5sqm
 first= 114.7sqm
 total floor area= 260.3sqm or 28sqsq



This drawing is copyright and remains the property of CSB (NSW) Pty Ltd. Reproduction copying or use in part or whole without written permission from CSB (NSW) Pty Ltd is strictly prohibited. Action will be taken against offenders. CSB (NSW) Pty Ltd takes no responsibility in any design similarities that may have occurred. Dimensions, pictures and photos are for illustration purposes only.