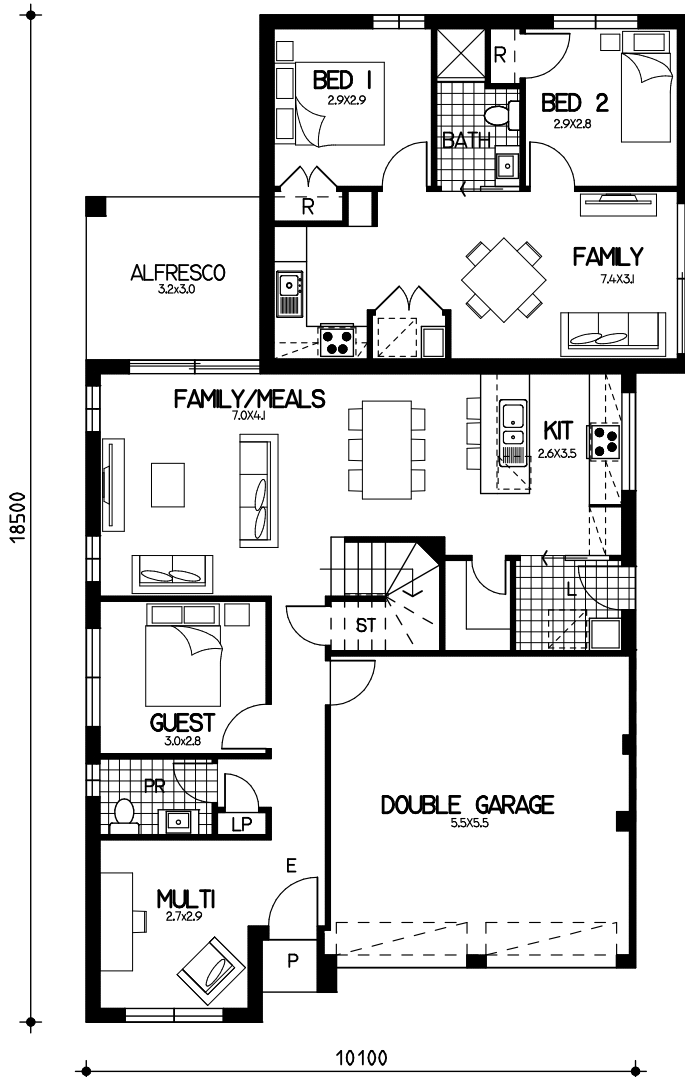


# Double Storey+ attached granny flat Gabri

## Floor Plan

ground= 83.1sqm  
 garage= 31.9sqm  
 porch= 1.0sqm  
 alfresco= 9.4sqm  
 first= 95.5 sqm  
 granny flat= 50.6sqm  
 total floor area= 259.9sqm or 28sqsq

10650



10100

## First Floor

18500

10100

## Ground Floor

This drawing is copyright and remains the property of CSB (NSW) Pty Ltd. Reproduction copying or use in part or whole without written permission from CSB (NSW) Pty Ltd is strictly prohibited. Action will be taken against offenders. CSB (NSW) Pty Ltd takes no responsibility in any design similarities that may have occurred. Dimensions, pictures and photos are for illustration purposes only.