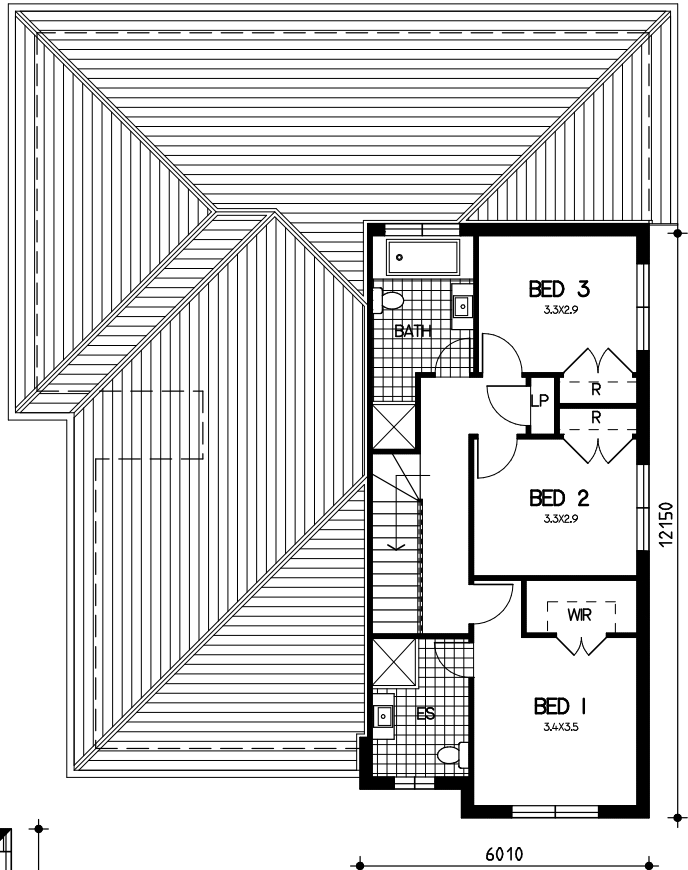


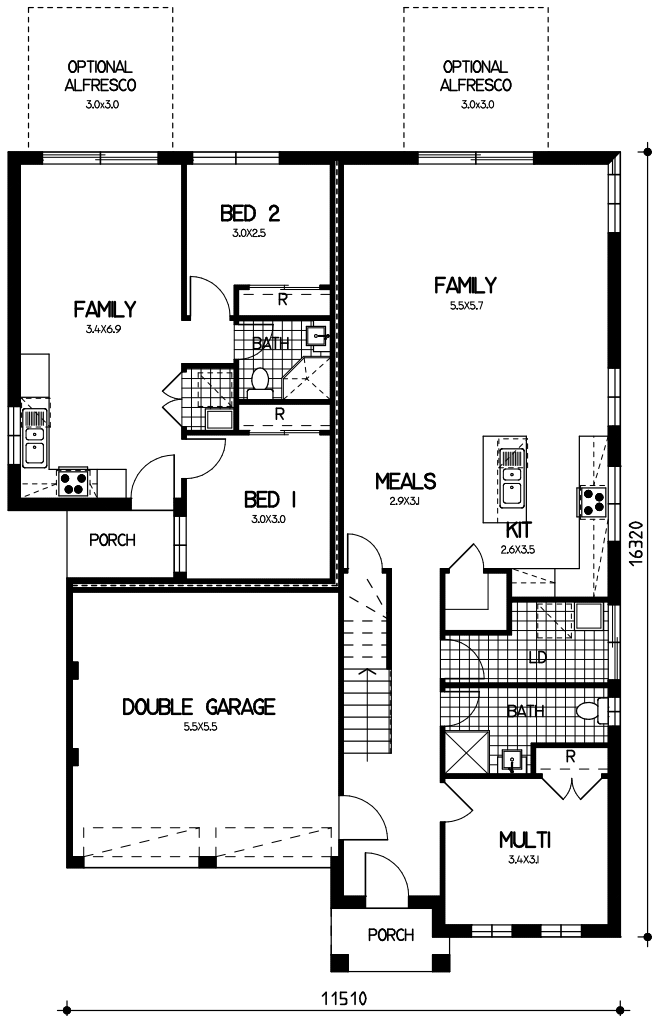
Double Storey+ attached granny flat Lilli

Floor Plan

ground= 94.8sqm
 garage= 33.5sqm
 porch= 3.0sqm
 first= 71.2sqm
 total floor area= 202.5sqm or 21.8sqm
 ground= 56.2sqm
 porch= 3.1sqm
 total floor area= 59.3sqm or 6.4sqm



First Floor



Ground Floor

This drawing is copyright and remains the property of CSB (NSW) Pty Ltd. Reproduction copying or use in part or whole without written permission from CSB (NSW) Pty Ltd is strictly prohibited. Action will be taken against offenders. CSB (NSW) Pty Ltd takes no responsibility in any design similarities that may have occurred. Dimensions, pictures and photos are for illustration purposes only.