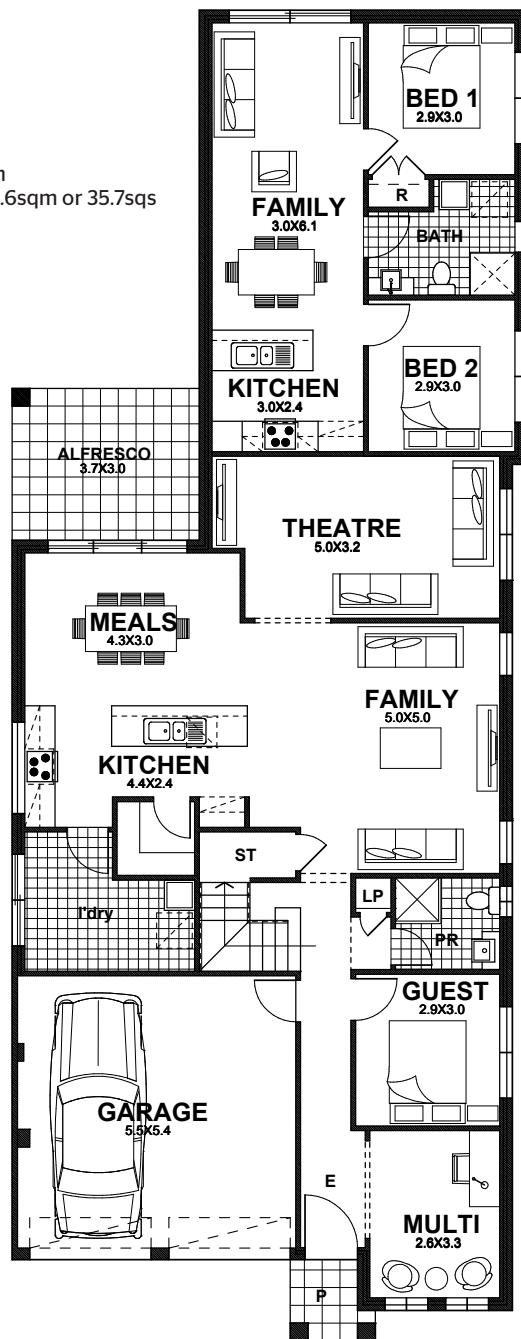


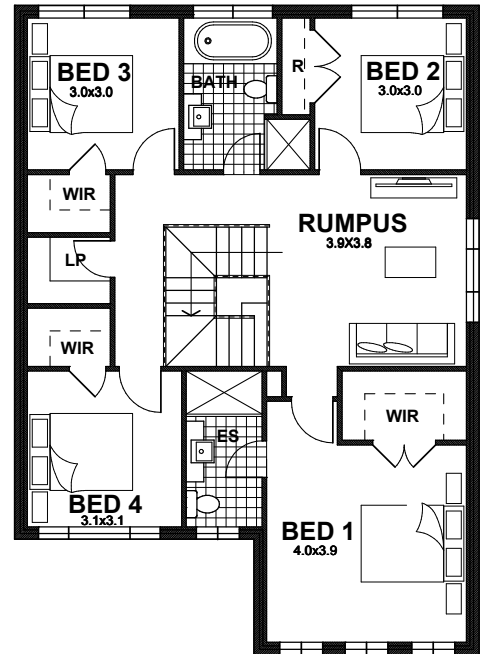
Double Storey+ attached granny flat Sara

Floor Plan

ground= 122.5sqm
 garage= 31.5sqm
 porch= 2.5sqm
 alfresco= 11.1sqm
 first= 106.9sqm
 granny flat= 57.1sqm
 total floor area= 331.6sqm or 35.7sq



9890
Ground Floor



9180
First Floor

25680

This drawing is copyright and remains the property of CSB (NSW) Pty Ltd. Reproduction copying or use in part or whole without written permission from CSB (NSW) Pty Ltd is strictly prohibited. Action will be taken against offenders. CSB (NSW) Pty Ltd takes no responsibility in any design similarities that may have occurred. Dimensions, pictures and photos are for illustration purposes only.