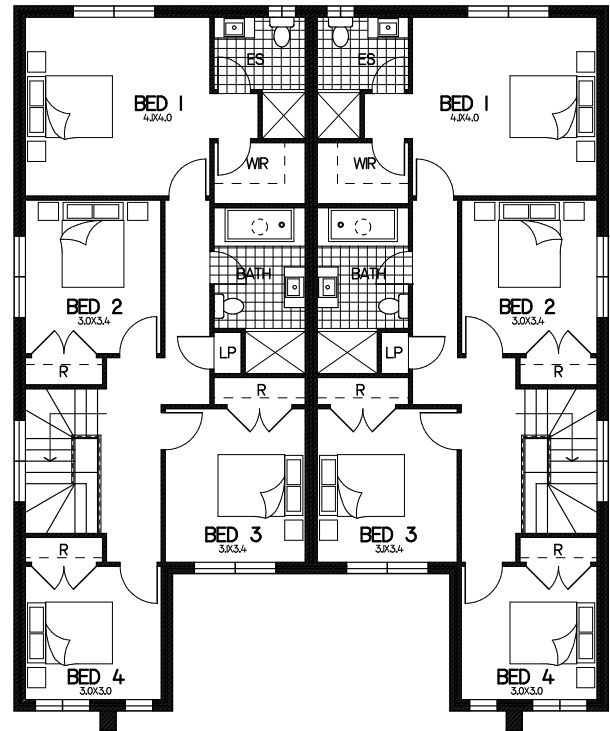


# Duplex attached Lina

## Floor Plan

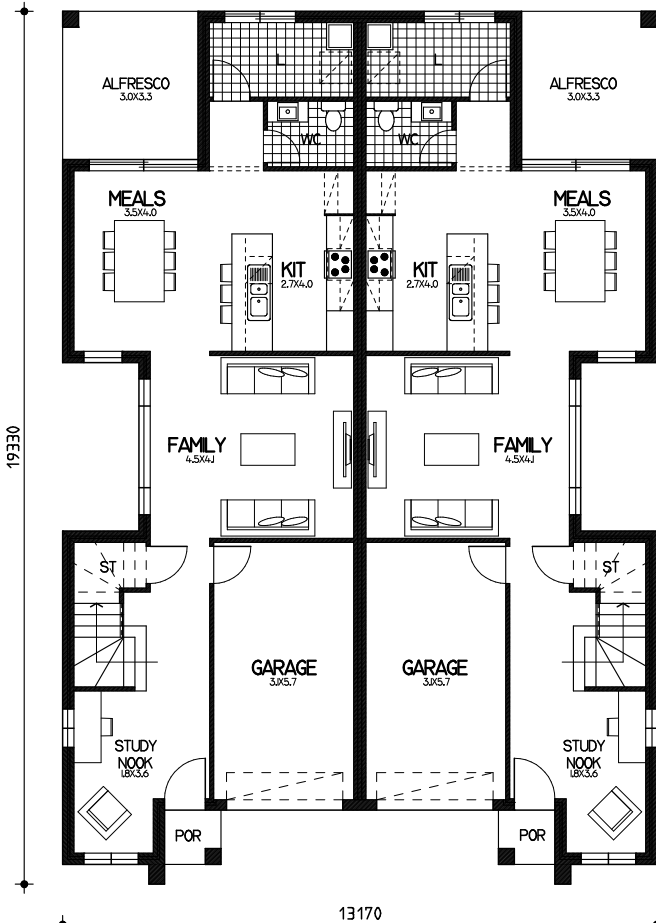
ground= 167.8sqm (83.9sqm per unit)  
 garage= 38.4sqm (19.2sqm per unit)  
 porch= 3.0sqm (1.5sqm per unit)  
 alfresco= 19.6sqm (9.8sqm per unit)  
 first= 187.2sqm (93.6sqm per unit)  
 total floor area= 416sqm or 44.8sqm (208sqm per unit)

15610



13170

## First Floor



19360

13170

## Ground Floor

This drawing is copyright and remains the property of CSB (NSW) Pty Ltd. Reproduction copying or use in part or whole without written permission from CSB (NSW) Pty Ltd is strictly prohibited. Action will be taken against offenders. CSB (NSW) Pty Ltd takes no responsibility in any design similarities that may have occurred. Dimensions, pictures and photos are for illustration purposes only.