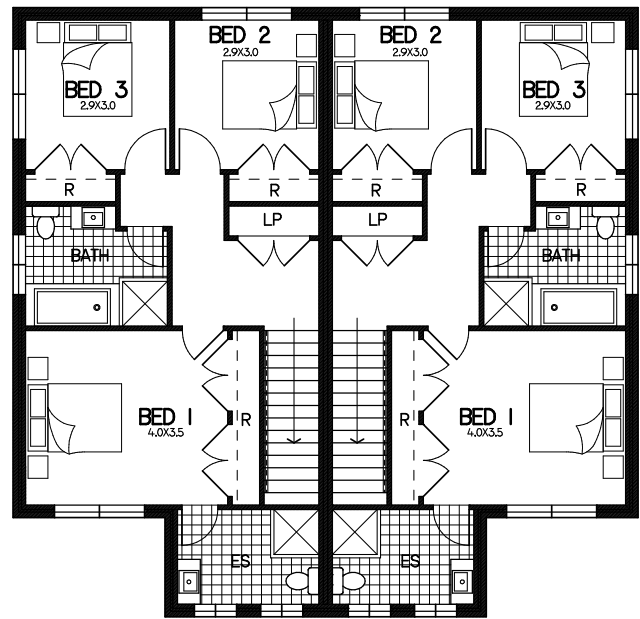


Duplex attached Maura

Floor Plan

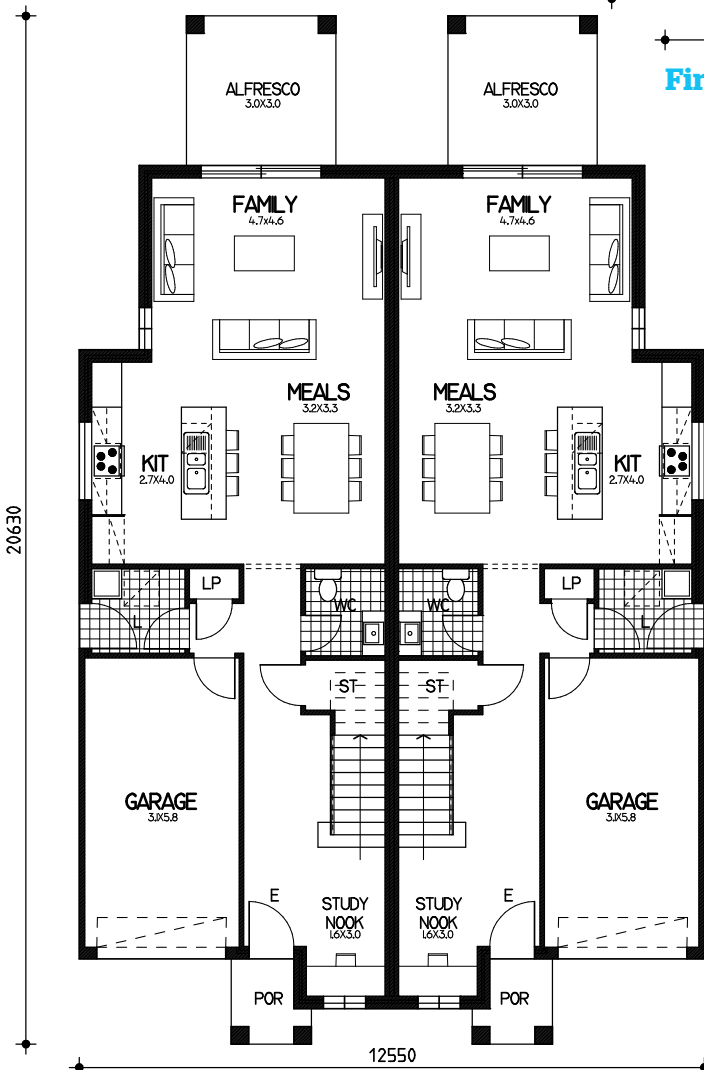
ground= 156sqm (78sqm per unit)
 garage= 38.6sqm (19.3sqm per unit)
 porch= 4.8sqm (2.4sqm per unit)
 alfresco= 18sqm (9sqm per unit)
 first= 141.2sqm (70.6sqm per unit)
 total floor area= 358.6sqm or 38.5sqm (179.3sqm per unit)

12220



12550

First Floor



20930

12550

Ground Floor

This drawing is copyright and remains the property of CSB (NSW) Pty Ltd. Reproduction copying or use in part or whole without written permission from CSB (NSW) Pty Ltd is strictly prohibited. Action will be taken against offenders. CSB (NSW) Pty Ltd takes no responsibility in any design similarities that may have occurred. Dimensions, pictures and photos are for illustration purposes only.