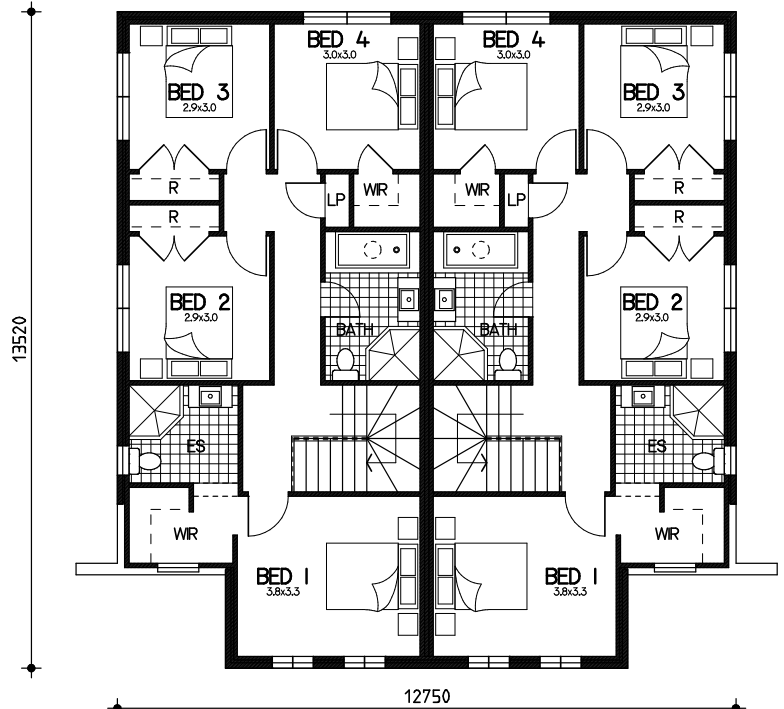


# Duplex attached Rosa

## Floor Plan

ground= 144sqm (72sqm per unit)  
 garage= 41.6sqm (20.8sqm per unit)  
 porch= 6.2sqm (3.1sqm per unit)  
 alfresco= 22sqm (11sqm per unit)  
 first= 163.8sqm (81.9sqm per unit)  
 total floor area= 377.6sqm or 40.6sqm (188.8sqm per unit)



First Floor



Ground Floor

This drawing is copyright and remains the property of CSB (NSW) Pty Ltd. Reproduction copying or use in part or whole without written permission from CSB (NSW) Pty Ltd is strictly prohibited. Action will be taken against offenders. CSB (NSW) Pty Ltd takes no responsibility in any design similarities that may have occurred. Dimensions, pictures and photos are for illustration purposes only.