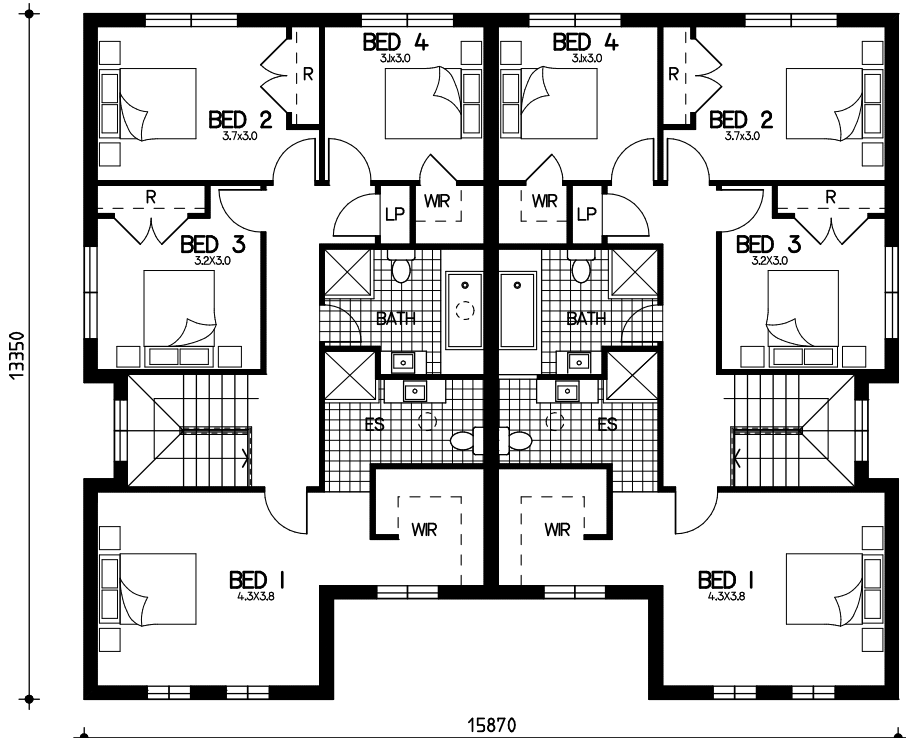


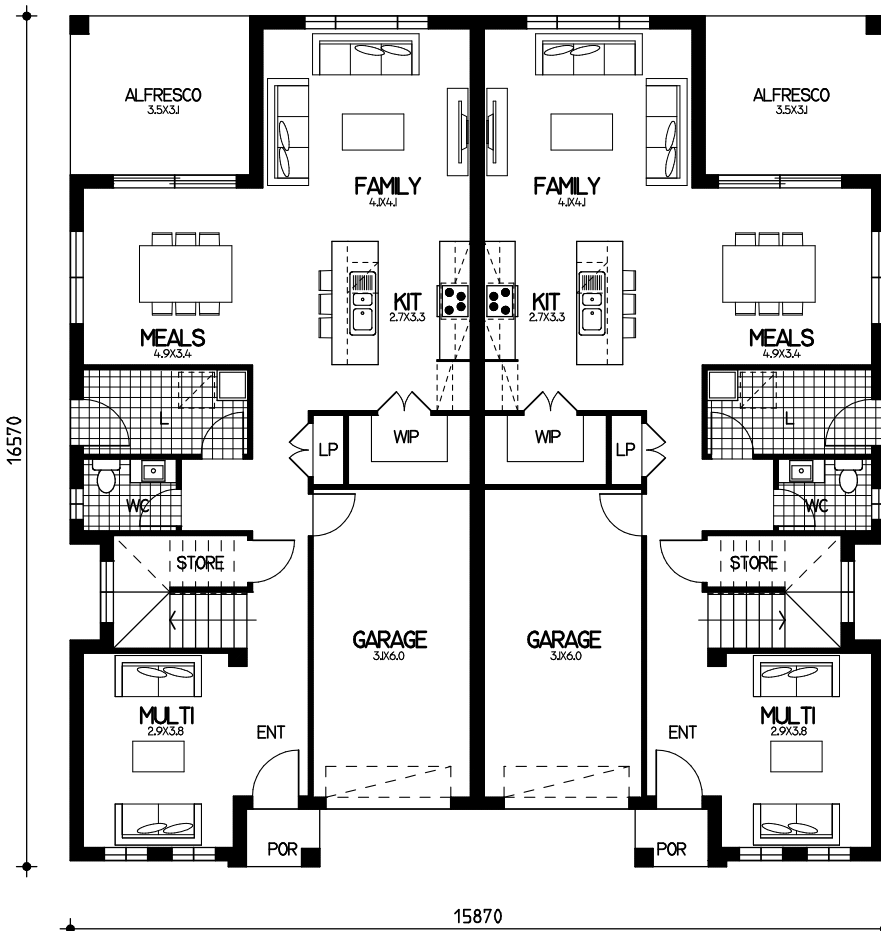
# Duplex attached Tea

## Floor Plan

ground= 188sqm (94sqm per unit)  
 garage= 40sqm (20sqm per unit)  
 porch= 3.2sqm (1.6sqm per unit)  
 alfresco= 21.4sqm (10.7sqm per unit)  
 first= 197.6sqm (98.8sqm per unit)  
 total floor area= 450.2sqm or 48.5sqm  
 (225.1sqm per unit)



First Floor



Ground Floor

This drawing is copyright and remains the property of CSB (NSW) Pty Ltd. Reproduction copying or use in part or whole without written permission from CSB (NSW) Pty Ltd is strictly prohibited. Action will be taken against offenders. CSB (NSW) Pty Ltd takes no responsibility in any design similarities that may have occurred. Dimensions, pictures and photos are for illustration purposes only.