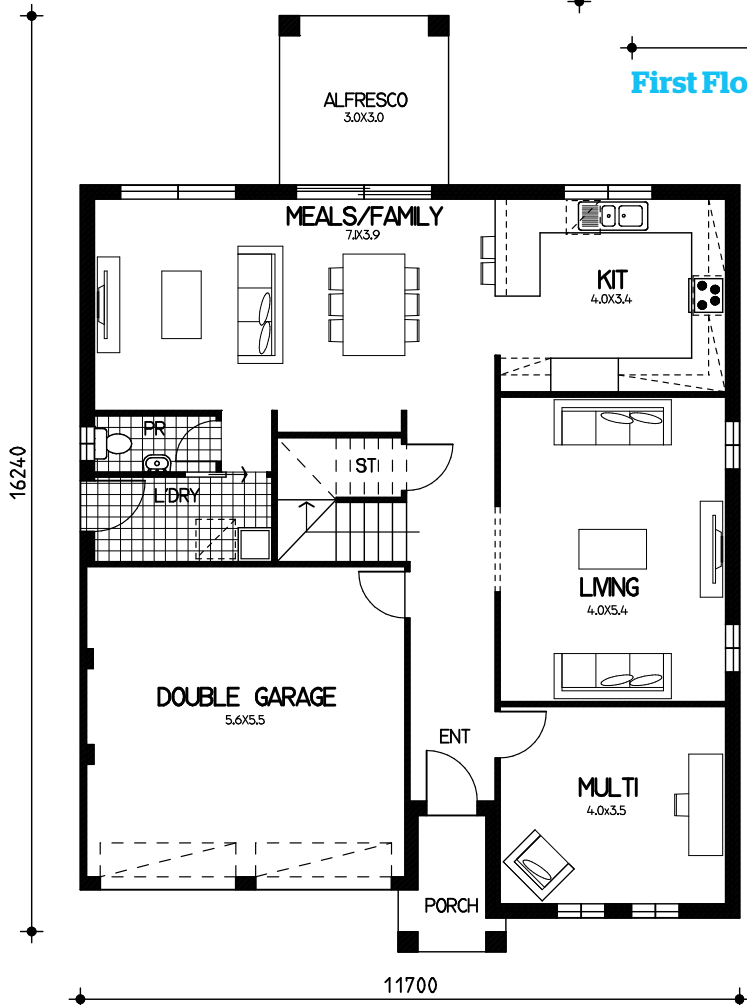
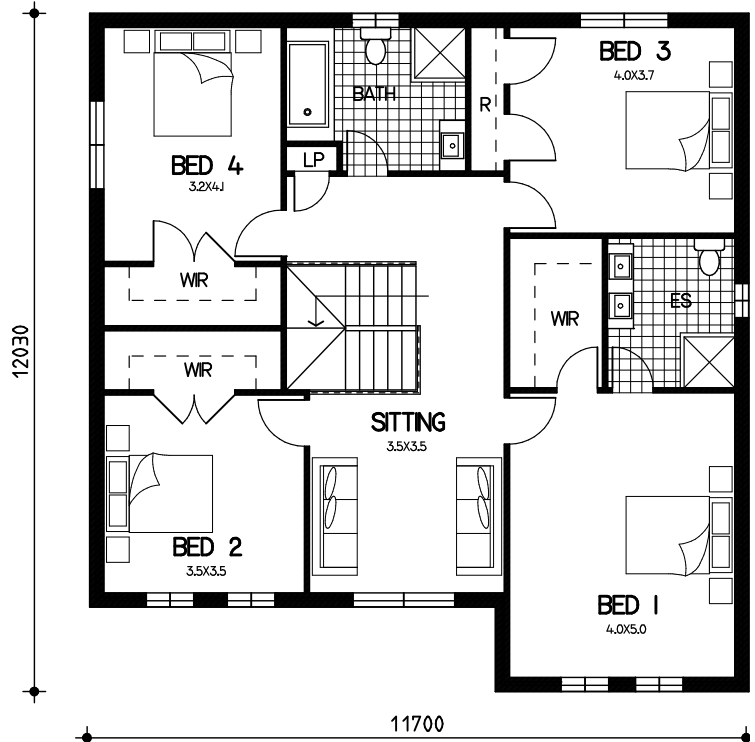


# Jessica

## Floor Plan

ground= 113.6sqm  
 garage= 33.3sqm  
 porch= 3.5sqm  
 alfresco= 9sqm  
 first= 129.9sqm  
 total floor area= 289.3sqm or 31.1sq



## Ground Floor

This drawing is copyright and remains the property of CSB (NSW) Pty Ltd. Reproduction copying or use in part or whole without written permission from CSB (NSW) Pty Ltd is strictly prohibited. Action will be taken against offenders. CSB (NSW) Pty Ltd takes no responsibility in any design similarities that may have occurred. Dimensions, pictures and photos are for illustration purposes only.