



Lot 1238 16 Rymill Street  
**GLEDSDOOD HILLS \$695,000**

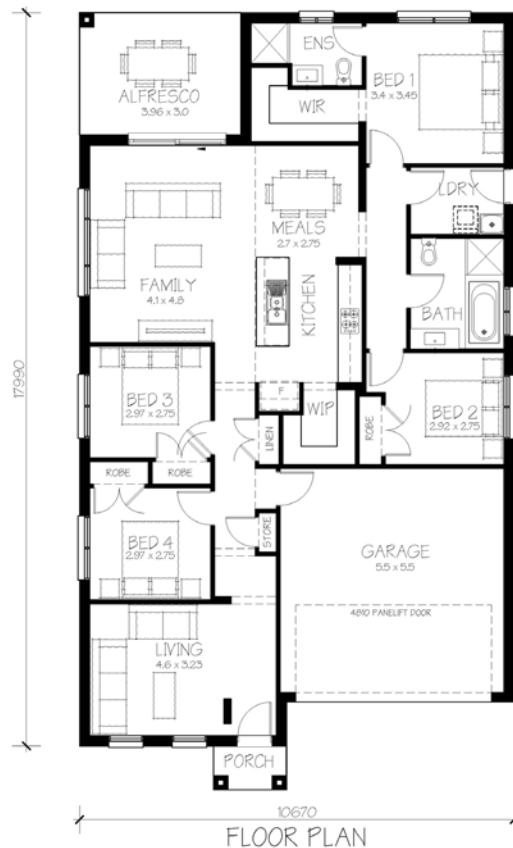
## Package includes:






- Standard site costs
- Custom design options\*
- Traditional façade feature
- Ducted air conditioning
- 2.6m ceiling height upgrade
- Security doors
- Alarm system
- 20mm Smart Stone bench tops to kitchen
- 20mm Smart Stone bench tops to bathrooms
- Stencil concrete driveway & path to front entry
- Tiled alfresco area
- Fly screens to all opening windows
- Carpet to bedrooms
- Floor tiles to living areas
- Vertical blinds
- NBN compliance
- Development application filing fees
- BASIX package
- Statutory warranties
- Builders agreed maintenance - 90 days from practical completion
- Downlights package
- Brick letter box
- Bathroom upgrades

## Eco-friendly features:

- Energy efficiency 5
- Water efficient appliances
- Wall / ceiling insulation
- Energy efficient appliances
- Rainwater storage tank

*All drawings and images are for illustrative purposes only  
\*Terms & Conditions apply*



-  **4**
-  **2**
-  **Double Garage**
-  **House Size 20 sq**
-  **Land Size 378m<sup>2</sup>**