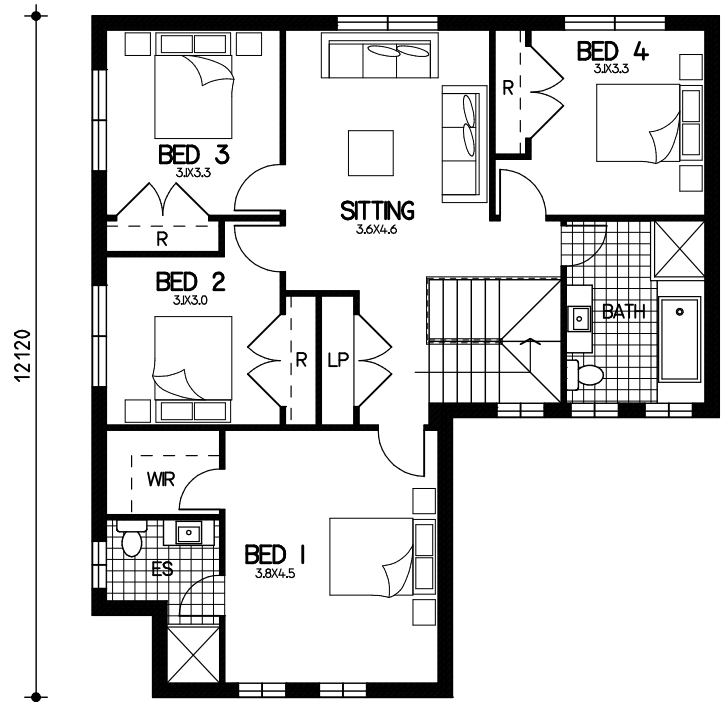


Lucia

Floor Plan

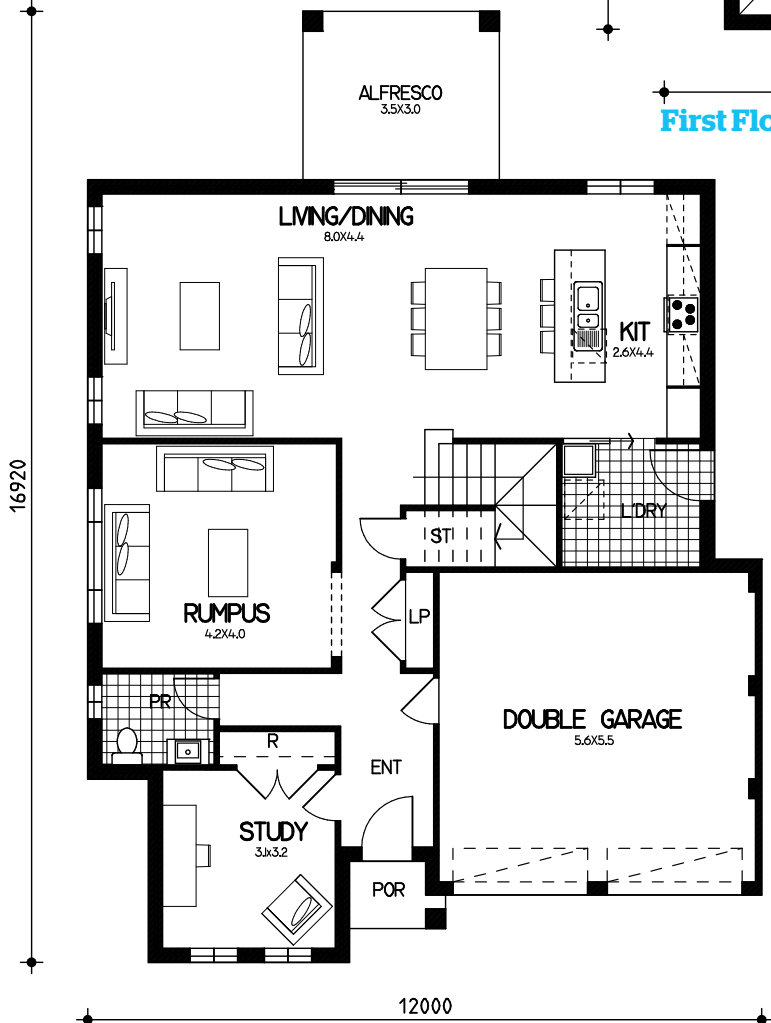
ground= 114.9sqm
 garage= 33.3sqm
 porch= 1.8sqm
 alfresco= 10.5sqm
 first= 110.2sqm
 total floor area= 270.7sqm or 29.1sqm



12120

11160

First Floor



16920

12000

Ground Floor

This drawing is copyright and remains the property of CSB (NSW) Pty Ltd. Reproduction copying or use in part or whole without written permission from CSB (NSW) Pty Ltd is strictly prohibited. Action will be taken against offenders. CSB (NSW) Pty Ltd takes no responsibility in any design similarities that may have occurred. Dimensions, pictures and photos are for illustration purposes only.