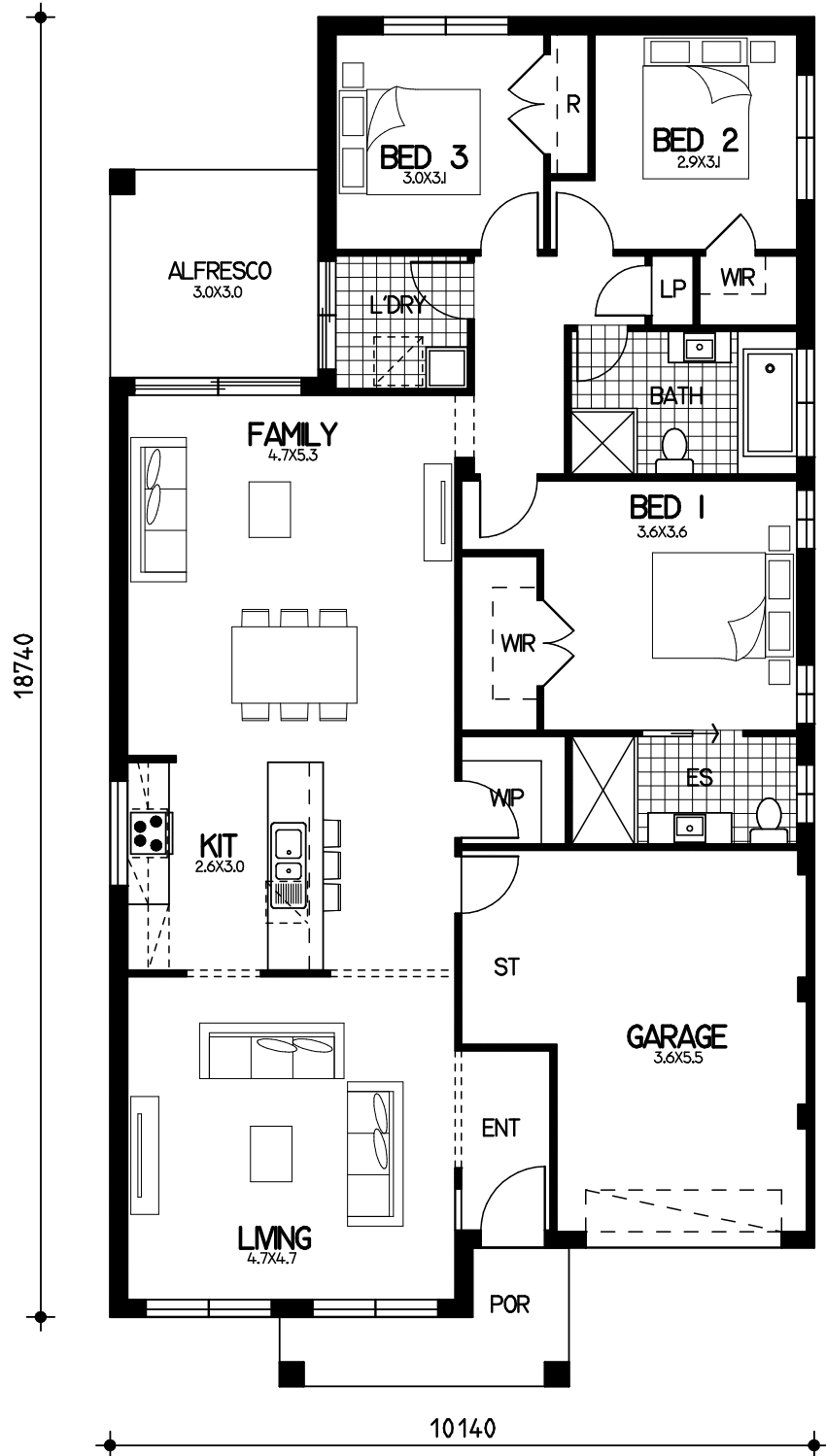


# Mia

## Floor Plan

ground= 144.3sqm  
garage= 25.1sqm  
porch= 5.5sqm  
alfresco= 9.0sqm  
total floor area= 183.9sqm or 19.8sqs



This drawing is copyright and remains the property of CSB (NSW) Pty Ltd. Reproduction copying or use in part or whole without written permission from CSB (NSW) Pty Ltd is strictly prohibited. Action will be taken against offenders. CSB (NSW) Pty Ltd takes no responsibility in any design similarities that may have occurred. Dimensions, pictures and photos are for illustration purposes only.