



Lot 20 Jardine Drive,  
**EDMONDSON PARK**    **\$1,046,000**

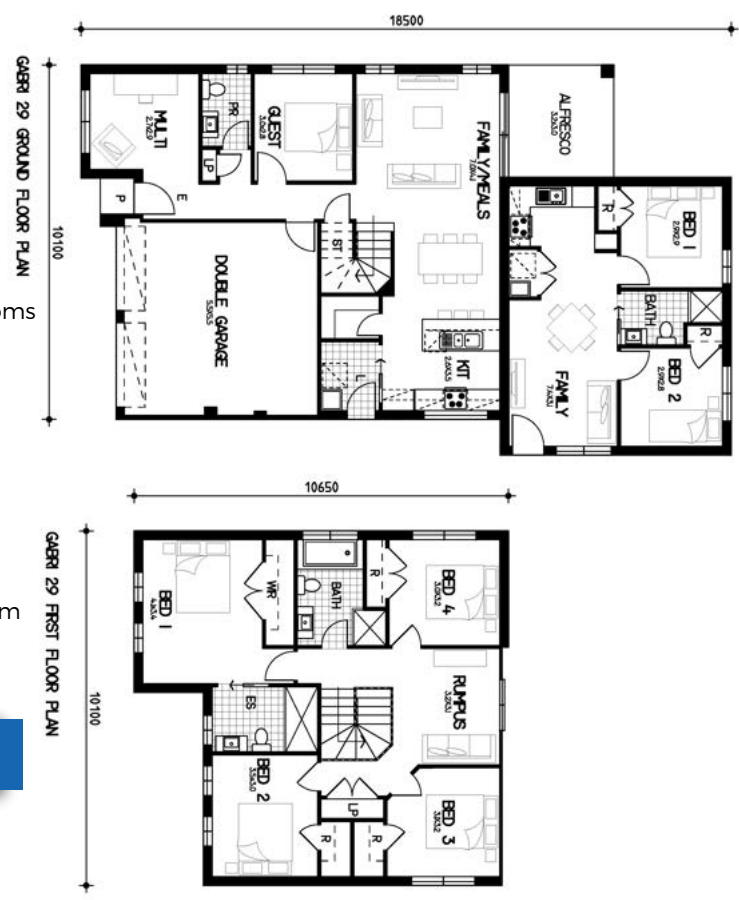
## Package includes:

- Standard site costs
- Custom design options\*
- Upgraded Façade feature
- Ducted Air Conditioning
- 2.6m ceiling height
- Security doors
- Alarm system
- 40mm Smart Stone bench tops to kitchen
- 20mm Smart Stone bench tops to bathrooms
- Driveway & path to front entry
- Tiled Alfresco area
- Fly screens to all opening windows
- Carpet to bedrooms
- Floor tiles to living areas
- Vertical blinds
- NBN compliance
- Development application filing fees
- BASIX package
- Statutory warranties
- Builders agreed maintenance - 90 days from the practical completion
- Downlights Package
- Brick Letter Box

## Eco-friendly features:

- Energy efficiency 5\*
- Water efficient appliances
- Wall / ceiling insulation
- Energy efficient appliances
- Rainwater storage tank

\* Terms & Conditions Apply



**7**

**4**

**Double Garage**

**House Size 29 sq**

**Land Size 452 m<sup>2</sup>**

The information and package pricing is correct at the time of publication 1/12/2018 but subject to change without notice. All designs subject to copyright. The images depicted in this advertisement are for illustrative purposes only and incorporate upgraded façade features, landscaping and other decorative items which are not included in the advertised price incorporates CSB Homes' Standard Site Costs only and may vary subject to site survey, site specific conditions, planning and authority controls, and developer guidelines or requirements.