

# House & Land Packages

Lot 46, Agaricus Road  
OAKVILLE

**\$1,184,800**

## PACKAGE INCLUSIONS

- ▶ Classic Facade
- ▶ Upgraded Site Costs Allowance
- ▶ Upgraded Ground Floor Ceiling Height to 2.6m
- ▶ Ducted Air Conditioning
- ▶ 20mm Upgraded Kitchen Benchtops
- ▶ 600mm Appliances
- ▶ Water Tap to Fridge
- ▶ Bathroom Wall Tiling to 1.2m
- ▶ Free Standing Bathtub
- ▶ Upgraded Downlights Package
- ▶ Security Alarm System
- ▶ Panel Lift Garage Door
- ▶ Security Doors
- ▶ Vertical Blinds
- ▶ Flyscreen's to all Opening Windows
- ▶ Carpet to Bedrooms
- ▶ Tiled Living Areas
- ▶ Driveway
- ▶ Brick Letterbox (Bagged & Painted Finish)
- ▶ Standard BASIX package
- ▶ Builder's agreed maintenance period - 90 days from practical completion
- ▶ NBN Pre-Wire (Builder's Provision)
- ▶ Custom design options available\*
- ▶ Development application fees

## Registered Land

Leppington Living Display Village  
5 Twilight Street, Leppington 2179

HomeWorld Marsden Park Sales Office  
28 Ellison Street, Marsden Park

0458 50 60 70 | (02) 9608 3333  
sales@csbhomes.com.au



\*The information and package pricing is correct at the time of publication 19/03/2024 but subject to change without notice. All designs are subject to copyright. The images depicted in this advertisement are for illustrative purposes only and incorporate upgraded façade features, landscaping and other decorative items which are not included in the Advertised price, incorporates CSB Homes' standard site costs only and may vary subject to site survey; site specific conditions; planning and authority controls; and developer guidelines or requirements.

**FREE  
SOLAR PANEL  
SYSTEM  
INCLUDED**



**CSB Homes**  
foremost in quality since 1994  
*it's personal!*



**Isla 21.4**

*Façade priced on application*



MINIMUM LAND DIMENSIONS		BED	BATH	CAR
HOUSE SIZE	21.4SQ	4	2	2
LAND SIZE	375M2			

[www.csbhomes.com.au](http://www.csbhomes.com.au)

# House & Land Packages

Lot 46, Agaricus Road,  
OAKVILLE

**\$1,184,800**

## Oakville Highlights

- ▶ 10 minute drive to North Kellyville & Marsden Park
- ▶ 5 minutes from Rouse Hill Town Centre & Metro Station
- ▶ Surrounded by a selection of leading Schools
- ▶ Rouse Hill Hospital expected to commence construction Q2 2023
- ▶ 40 minute drive to Sydney CBD

The long-term value of a new home goes beyond the cost of its construction.

To find out more about the CSB Homes difference, scan the below QR code to go Behind the Build!



**Behind the Build**

CSB Homes



Leppington Living Display Village  
5 Twilight Street, Leppington 2179

HomeWorld Marsden Park Sales Office  
28 Ellison Street, Marsden Park

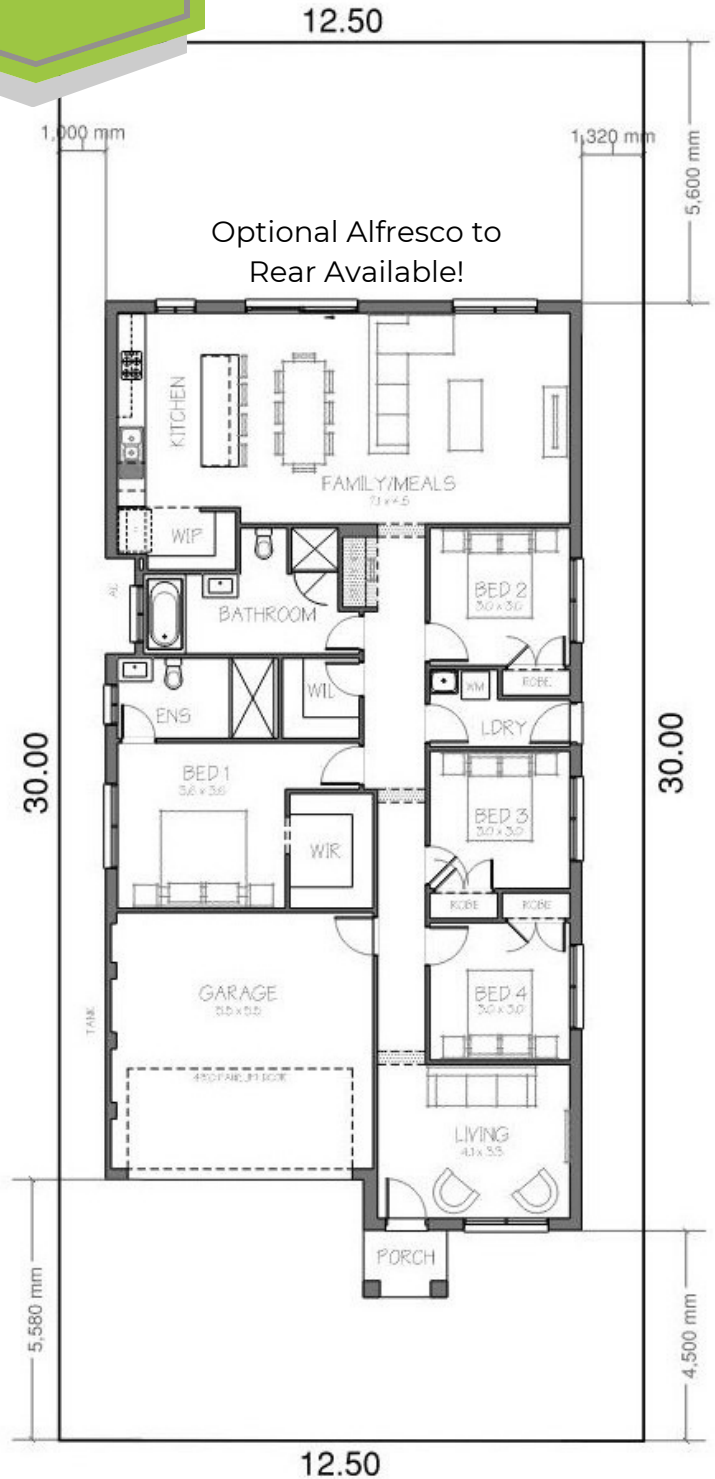
0458 50 60 70 | (02) 9608 3333  
sales@csbhomes.com.au



\*The information and package pricing is correct at the time of publication 19/03/2024 but subject to change without notice. All designs are subject to copyright. The images depicted in this advertisement are for illustrative purposes only and incorporate upgraded façade features, landscaping and other decorative items which are not included in the Advertised price, incorporates CSB Homes' standard site costs only and may vary subject to site survey; site specific conditions; planning and authority controls; and developer guidelines or requirements.

CSB Homes  
foremost in quality since 1994  
it's personal!  
**CUSTOM DESIGN OPTIONS AVAILABLE**

CSB Homes  
foremost in quality since 1994  
it's personal!



## Registered Land

MINIMUM LAND DIMENSIONS	BED	BATH	CAR
HOUSE SIZE 21.4SQ	4	2	2
LAND SIZE 375M2			

www.csbhomes.com.au