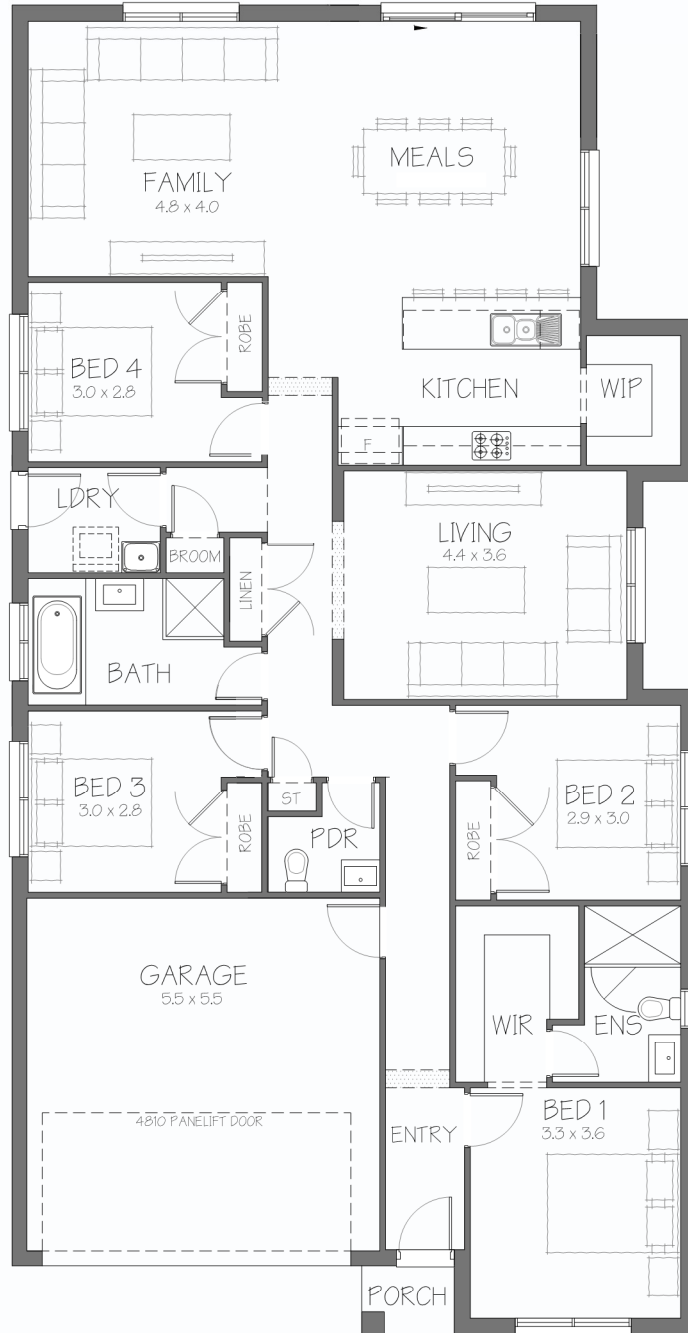


# Ruby 22.1 MKII

GROUND FLOOR LIVING	170.73M <sup>2</sup>
GARAGE	32.83M <sup>2</sup>
PORCH	1.56M <sup>2</sup>
<b>TOTAL</b>	<b>205.09M<sup>2</sup></b>
SQUARES	21.075Q



MINIMUM LAND DIMENSIONS	LIVING	BED	BATH	CAR
HOUSE DIMENSIONS 10.67 x 20.77 MINIMUM LOT SIZE 12.50 x 28.5 CDC MINIMUM LOT SIZE 12.50 x 29.5 DA/CC	2	4	3	2

This drawing is copyright and remains the property of CSB (NSW) Pty. Ltd. Reproduction copying or use in part or whole without written permission from CSB (NSW) Pty. Ltd. is strictly prohibited. Action will be taken against offenders. CSB (NSW) Pty. Ltd. takes no responsibility in any design similarities that may have occurred. Dimensions, pictures and photos are for illustration purposes only.