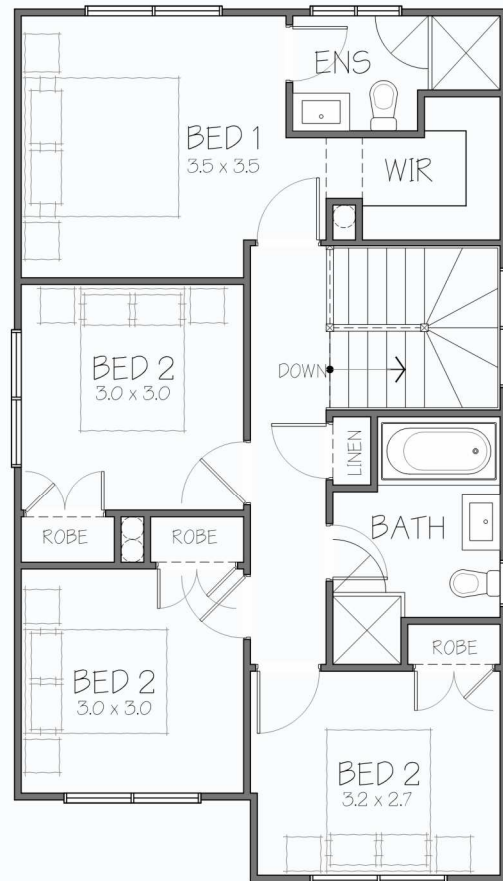
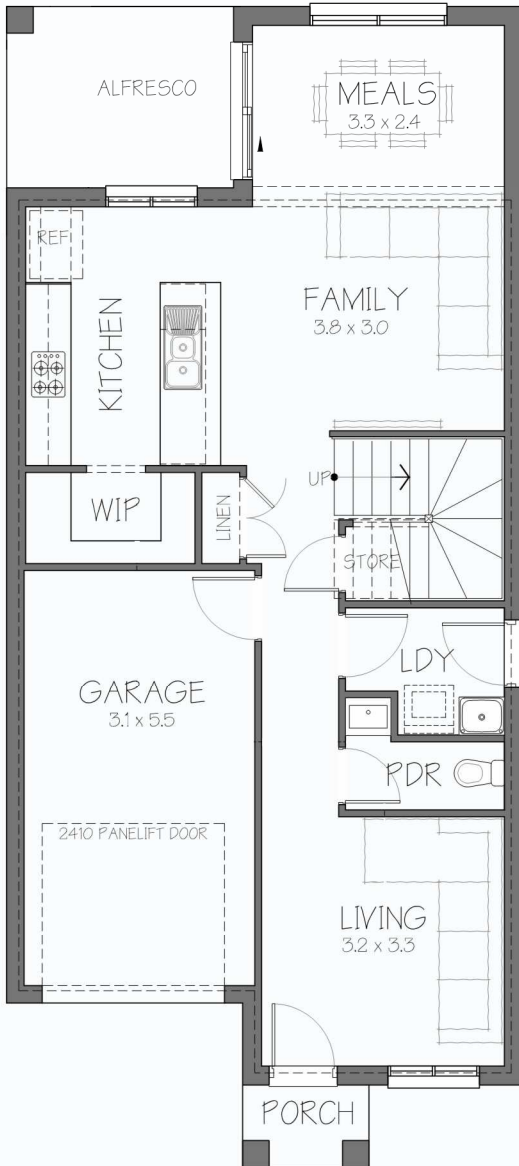


9.0M FRONTAGE

# Harper 18.0

GROUND FLOOR LIVING	68.10M <sup>2</sup>
FIRST FLOOR LIVING	66.83M <sup>2</sup>
VOID	4.97M <sup>2</sup>
GARAGE	18.79M <sup>2</sup>
PORCH	1.80M <sup>2</sup>
<b>TOTAL</b>	<b>160.49M<sup>2</sup></b>
SQUARES	17.27SQ
ALFRESCO	7.27M <sup>2</sup>
SQUARES	18.06SQ



MINIMUM LAND DIMENSIONS	LIVING	BED	BATH	CAR
HOUSE DIMENSIONS 6.83 x 14.27				
MINIMUM LOT SIZE 9.0 x 22.0 CDC	2	4	3	1
MINIMUM LOT SIZE 9.0 x 23.0 DA/CC				

This drawing is copyright and remains the property of CSB (NSW) Pty. Ltd. Reproduction copying or use in part or whole without written permission from CSB (NSW) Pty. Ltd. is strictly prohibited. Action will be taken against offenders. CSB (NSW) Pty. Ltd. takes no responsibility in any design similarities that may have occurred. Dimensions, pictures and photos are for illustration purposes only.