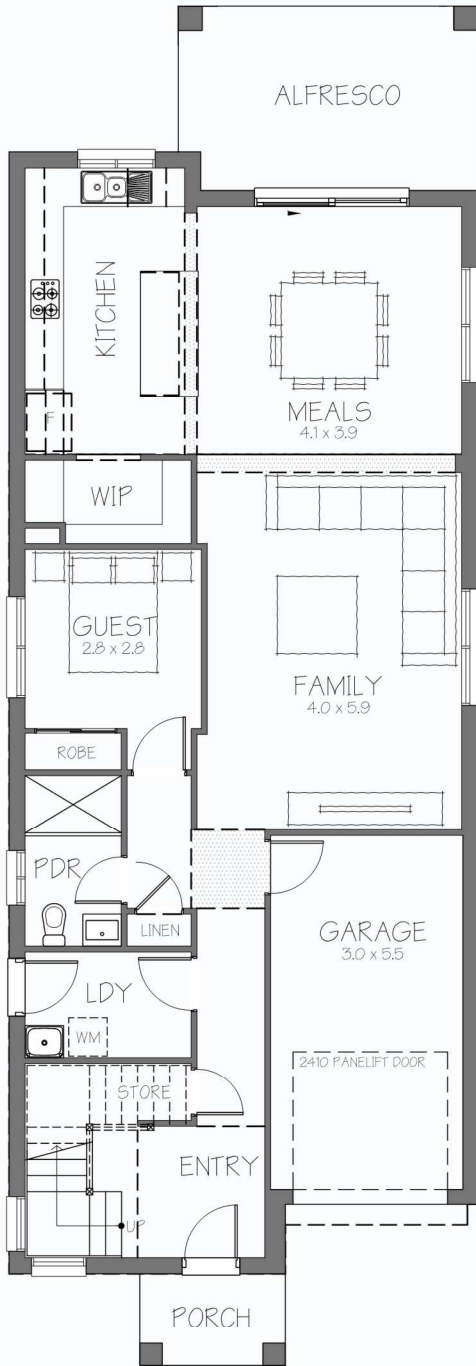


9.5M FRONTAGE

# Savannah 24.7

GROUND FLOOR LIVING	103.83M <sup>2</sup>
FIRST FLOOR LIVING	79.68M <sup>2</sup>
VOID	11.54M <sup>2</sup>
GARAGE	18.20M <sup>2</sup>
PORCH	3.27M <sup>2</sup>
<b>TOTAL</b>	<b>216.52M<sup>2</sup></b>
SQUARES	23.30SQ
ALFRESCO	13.24M <sup>2</sup>
SQUARES	24.73SQ



MINIMUM LAND DIMENSIONS	LIVING	BED	BATH	CAR
HOUSE DIMENSIONS 7.79 x 19.6				
MINIMUM LOT SIZE 9.5 x 27.3 CDC	2	4	3	1
MINIMUM LOT SIZE 9.5 x 28.3 DA/CC				

*This drawing is copyright and remains the property of CSB (NSW) Pty. Ltd. Reproduction copying or use in part or whole without written permission from CSB (NSW) Pty. Ltd. is strictly prohibited. Action will be taken against offenders. CSB (NSW) Pty. Ltd. takes no responsibility in any design similarities that may have occurred. Dimensions, pictures and photos are for illustration purposes only.*