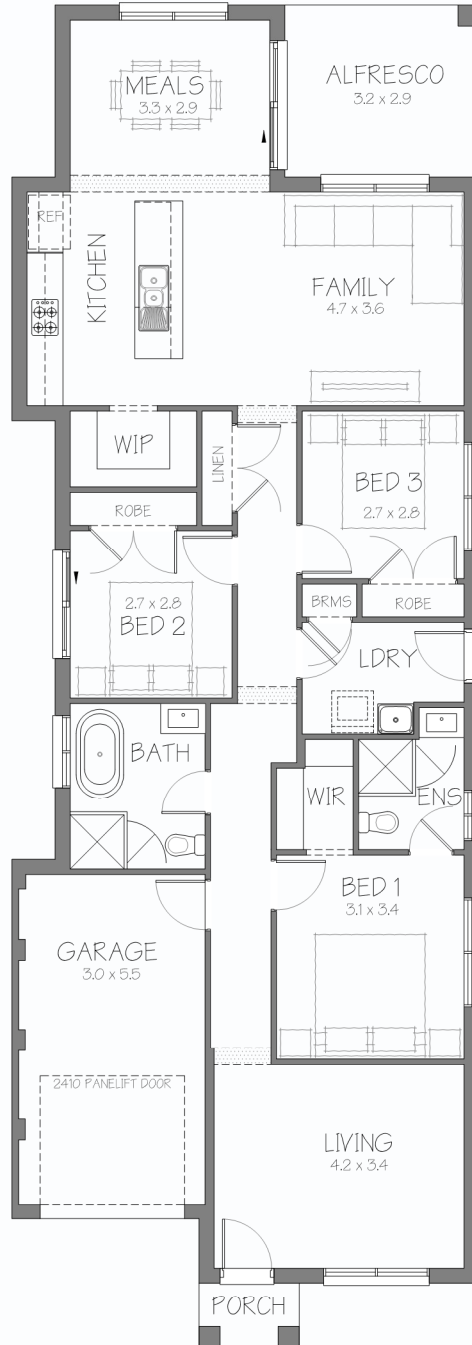


# Laila 17.0

GROUND FLOOR LIVING	127.60M <sup>2</sup>
GARAGE	18.66M <sup>2</sup>
PORCH	1.80M <sup>2</sup>
<b>TOTAL</b>	<b>148.06M<sup>2</sup></b>
SQUARES	16.00SQ
ALFRESCO	9.33M <sup>2</sup>
SQUARES	17.00SQ



MINIMUM LAND DIMENSIONS	LIVING	BED	BATH	CAR
HOUSE DIMENSIONS 7.79 x 21.35 MINIMUM LOT SIZE 9.0 x 29.0 CDC MINIMUM LOT SIZE 9.0 x 30.0 DA/CC ZERO LOT CONSTRUCTION	2	3	2	1

This drawing is copyright and remains the property of CSB (NSW) Pty. Ltd. Reproduction copying or use in part or whole without written permission from CSB (NSW) Pty. Ltd. is strictly prohibited. Action will be taken against offenders. CSB (NSW) Pty. Ltd. takes no responsibility in any design similarities that may have occurred. Dimensions, pictures and photos are for illustration purposes only.