

# House & Land Packages

8 Agaricus Road,  
OAKVILLE

**\$1,288,880**

## PACKAGE INCLUSIONS

- ▶ Windsor Facade Included
- ▶ Upgraded Site Cost Allowance
- ▶ Upgraded Ground Floor Ceiling Height to 2.7m
- ▶ Ducted Air Conditioning
- ▶ 900mm Appliances Package
- ▶ 20mm Smart Stone Kitchen Benchtops
- ▶ Bathroom Wall Tiling to 1.2m High
- ▶ Free Standing Bathtub
- ▶ Semi-Frameless Shower Screens
- ▶ Upgraded Downlights Package
- ▶ Security Alarm System
- ▶ Panel Lift Garage Door
- ▶ Vertical Blinds
- ▶ Flyscreens to all Opening Windows
- ▶ Carpets to Bedrooms
- ▶ Tiling Living Areas
- ▶ Driveway
- ▶ Brick Letterbox (Bagged & Painted Finish)
- ▶ Upgraded BASIX Allowance Included
- ▶ Builder's agreed maintenance period - 90 days from practical completion
- ▶ NBN Pre-Wire (Builder's Provision)
- ▶ Custom design options available\*
- ▶ Development application fees
- ▶ **+ MANY MORE (ask about our 30 year promotion!)**

## Registered Land

Leppington Living Display Village  
5 Twilight Street, Leppington 2179

HomeWorld Marsden Park Sales Office  
28 Ellison Street, Marsden Park

0458 50 60 70 | (02) 9608 3333  
sales@csbhomes.com.au



\*The information and package pricing is correct at the time of publication 13/06/24 but subject to change without notice. All designs are subject to copyright. The images depicted in this advertisement are for illustrative purposes only and incorporate upgraded façade features, landscaping and other decorative items which are not included in the Advertised price, incorporates CSB Homes' standard site costs only and may vary subject to site survey; site specific conditions; planning and authority controls; and developer guidelines or requirements.



**Savannah 25.0**

*Ultra Modern Façade Shown - priced on application*



| MINIMUM LAND DIMENSIONS |         | BED | BATH | CAR |
|-------------------------|---------|-----|------|-----|
| HOUSE SIZE              | 24.85SQ | 4   | 3    | 2   |
| LAND SIZE               | 347M2   |     |      |     |

[www.csbhomes.com.au](http://www.csbhomes.com.au)

# House & Land Packages

8 Agaricus Road,  
OAKVILLE

**\$1,288,880**

## Oakville Highlights

- ▶ 10 minute drive to North Kellyville & Marsden Park
- ▶ 5 minutes from Rouse Hill Town Centre & Metro Station
- ▶ Surrounded by a selection of leading Schools
- ▶ Rouse Hill Hospital expected to commence construction Q2 2023
- ▶ 40 minute drive to Sydney CBD

The long-term value of a new home goes beyond the cost of it's construction.

To find out more about the CSB Homes difference, scan the below QR code to go Behind the Build!



**Behind the Build**  
CSB Homes



Leppington Living Display Village  
5 Twilight Street, Leppington 2179

HomeWorld Marsden Park Sales Office  
28 Ellison Street, Marsden Park

0458 50 60 70 | (02) 9608 3333  
sales@csbhomes.com.au

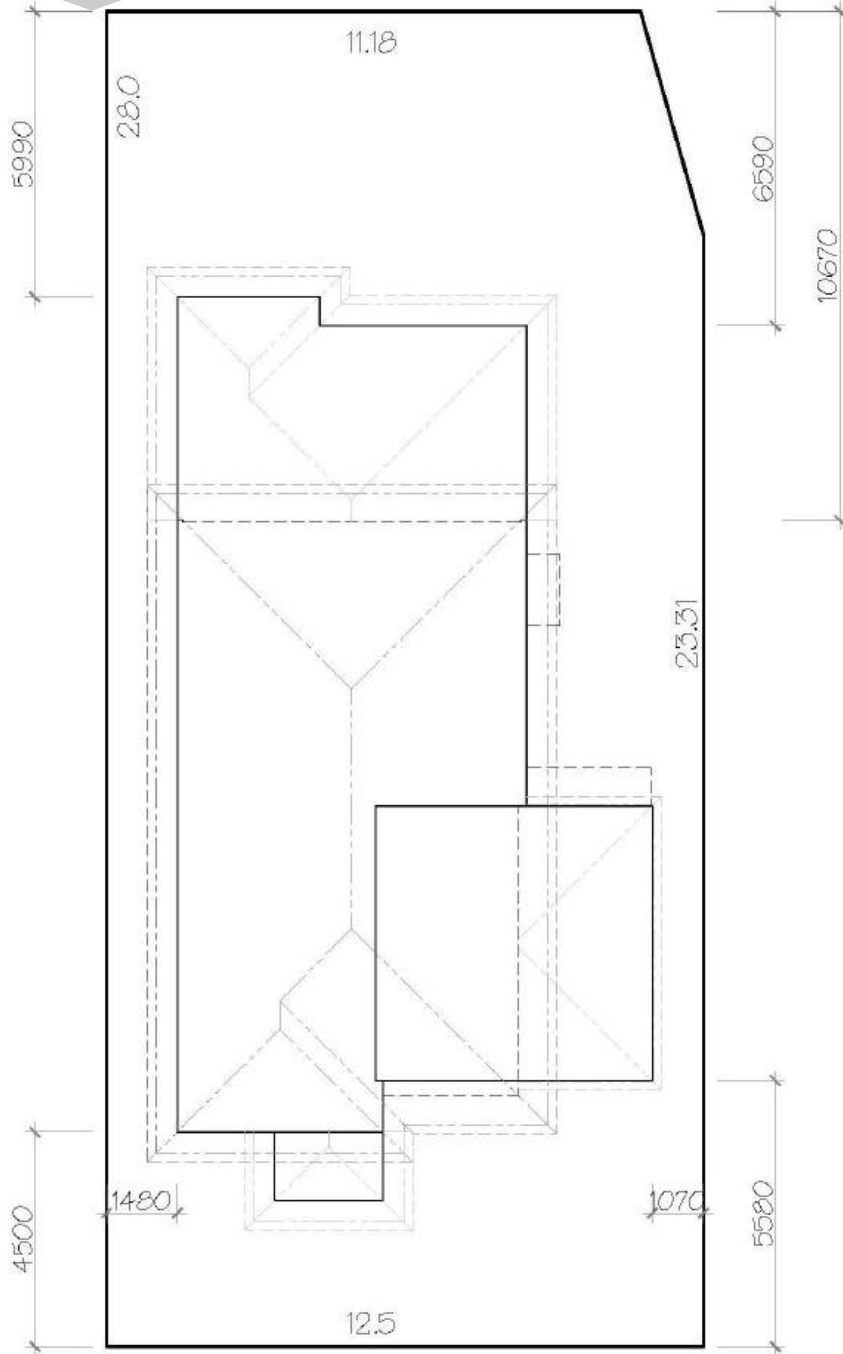


\*The information and package pricing is correct at the time of publication 13/06/24 but subject to change without notice. All designs are subject to copyright. The images depicted in this advertisement are for illustrative purposes only and incorporate upgraded façade features, landscaping and other decorative items which are not included in the Advertised price, incorporates CSB Homes' standard site costs only and may vary subject to site survey; site specific conditions; planning and authority controls; and developer guidelines or requirements.

CSB Homes  
*it's personal!*  
**CUSTOM DESIGN OPTIONS AVAILABLE**

CSB Homes  
foremost in quality since 1994  
*it's personal!*

SUBJECT TO SURVEY



## Registered Land

| MINIMUM LAND DIMENSIONS | BED | BATH | CAR |
|-------------------------|-----|------|-----|
| HOUSE SIZE 24.85SQ      | 4   | 3    | 2   |
| LAND SIZE 347M2         |     |      |     |

[www.csbhomes.com.au](http://www.csbhomes.com.au)