

# House & Land Packages

Lot 940 Shepherd Street,  
WILTON GREENS

**\$938,880**

## PACKAGE INCLUSIONS

- ▶ Hamptons Facade
- ▶ Upgraded Site Allowance
- ▶ Upgraded Ceiling Height to 2.6m
- ▶ Ducted Air Conditioning
- ▶ 600mm Westinghouse Appliances
- ▶ 20mm Smart Stone Kitchen Benchtops
- ▶ Bathroom Wall Tiling to 1.2m High
- ▶ Free Standing Bathtub
- ▶ Upgraded Downlights Package
- ▶ Security Alarm System
- ▶ Panel Lift Garage Door
- ▶ Vertical Blinds
- ▶ Flyscreens to all Opening Windows
- ▶ Carpets to Bedrooms
- ▶ Tiling Living Areas
- ▶ Driveway
- ▶ Brick Letterbox (Bagged & Painted Finish)
- ▶ Upgraded BASIX Allowance Included
- ▶ Builder's agreed maintenance period  
- 90 days from practical completion
- ▶ NBN Pre-Wire (Builder's Provision)
- ▶ Custom design options available\*
- ▶ Development application fees

## Registered Land

Leppington Living Display Village  
5 Twilight Street, Leppington 2179

HomeWorld Marsden Park Sales Office  
28 Ellison Street, Marsden Park

0468 397 931 | (02) 9608 3333  
sales@csbhomes.com.au



\*The information and package pricing is correct at the time of publication 06/11/23 but subject to change without notice. All designs are subject to copyright. The images depicted in this advertisement are for illustrative purposes only and incorporate upgraded facade features, landscaping and other decorative items which are not included in the Advertised price, incorporates CSB Homes' standard site costs only and may vary subject to site survey; site specific conditions; planning and authority controls; and developer guidelines or requirements.

**FREE  
SOLAR PANEL  
SYSTEM  
INCLUDED**

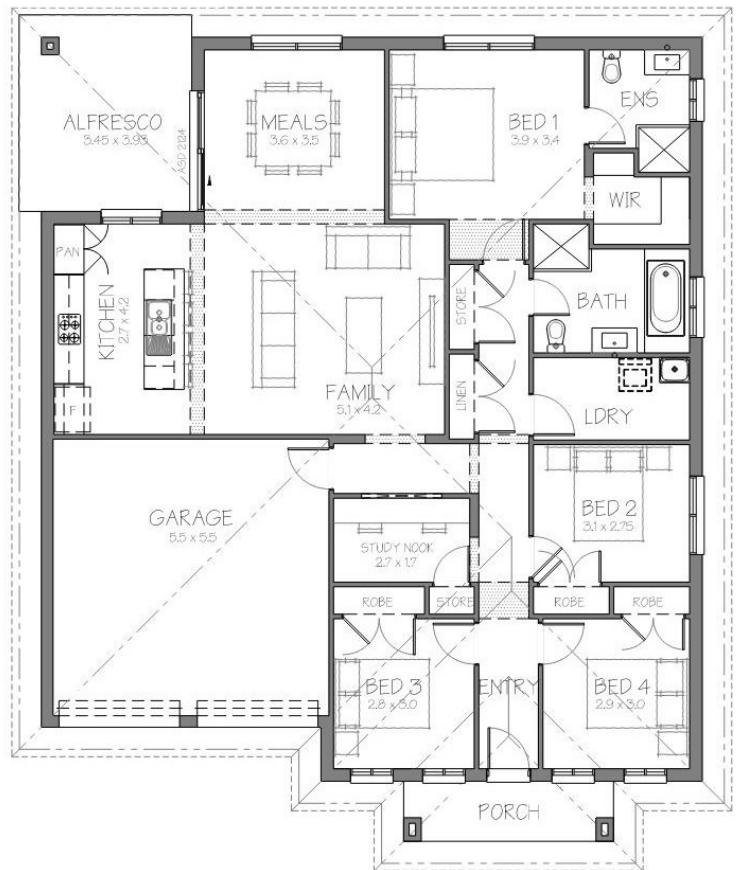


**CSB Homes**  
foremost in quality since 1994  
*it's personal!*



**Harmony 21**

*Façade priced on application*



MINIMUM LAND DIMENSIONS		BED	BATH	CAR
HOUSE SIZE	21.3SQ	4	2	2
LAND SIZE	450M2			

[www.csbhomes.com.au](http://www.csbhomes.com.au)

# House & Land Packages

CSB Homes  
*it's personal!*  
**CUSTOM DESIGN OPTIONS AVAILABLE**

CSB Homes  
 foremost in quality since 1994  
*it's personal!*

Lot 940 Shepherd Street,  
 WILTON GREENS

**\$938,880**

## Wilton Greens Highlights

- ▶ 30 minute drive to Wollongong
- ▶ 25 minute drive to Campbelltown Hospital
- ▶ 25 minute drive to Macarthur Square Shopping Centre
- ▶ 15 minute drive to Picton Shops
- ▶ Surrounded by walking tracks, cycle paths, sporting ovals and dedicated active open spaces

The long-term value of a new home goes beyond the cost of its construction.

To find out more about the CSB Homes difference, scan the below QR code to go Behind the Build!



**Behind the Build**

CSB Homes



Leppington Living Display Village  
 5 Twilight Street, Leppington 2179

HomeWorld Marsden Park Sales Office  
 28 Ellison Street, Marsden Park

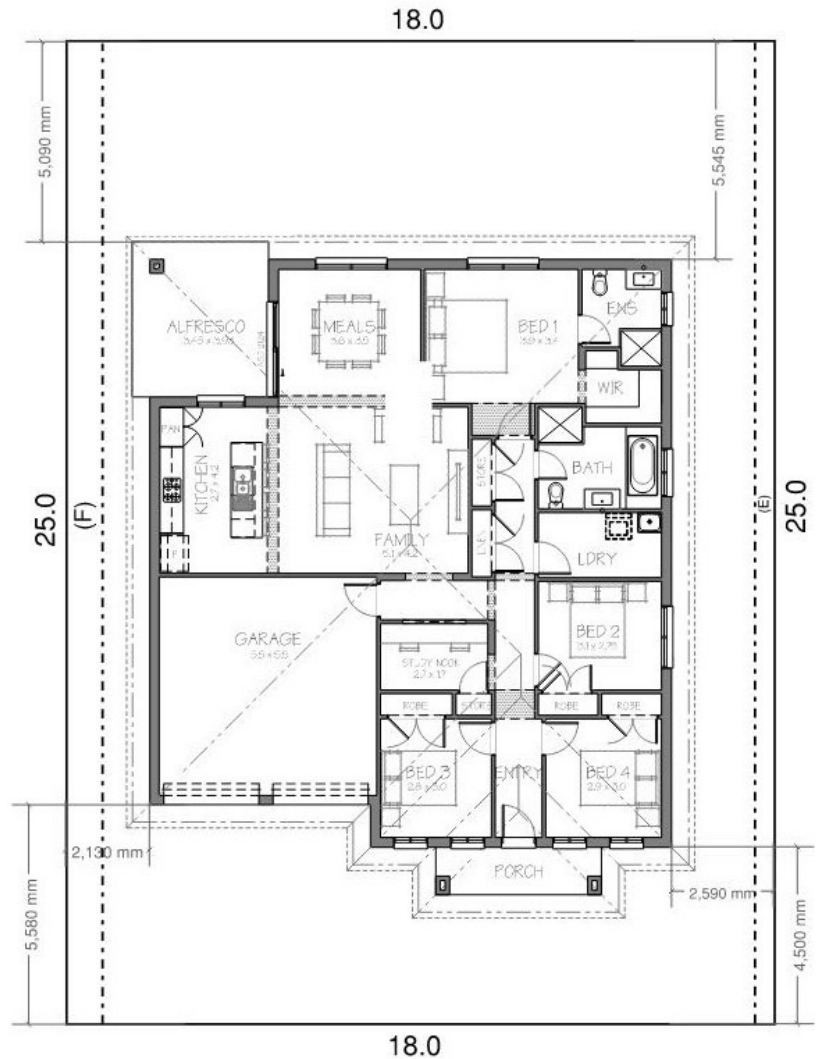
0468 397 931 | (02) 9608 3333  
 sales@csbhomes.com.au



FINALIST 2022  
 HIA NSW Region  
 Display Home  
 \$450,001 - \$500,000



\*The information and package pricing is correct at the time of publication 06/11/23 but subject to change without notice. All designs are subject to copyright. The images depicted in this advertisement are for illustrative purposes only and incorporate upgraded façade features, landscaping and other decorative items which are not included in the Advertised price, incorporates CSB Homes' standard site costs only and may vary subject to site survey; site specific conditions; planning and authority controls; and developer guidelines or requirements.



SHEPHERD STREET

## Registered Land

MINIMUM LAND DIMENSIONS	BED	BATH	CAR
HOUSE SIZE 21.3SQ	4	2	2
LAND SIZE 450M2			

www.csbhomes.com.au