

Custom designed and Quality constructed Homes since 1994

- You personalise it, we build it!



Introducing Savannah 30.0



CSB Homes
foremost in quality since 1994
it's personal!



Leppington Living

ON DISPLAY AT
LEPPINGTON LIVING DISPLAY VILLAGE,
7 TWILIGHT STREET LEPPINGTON

Designed to fit on a 307m² block with a 11.2m frontage, the Savannah 30sq is skilfully designed with a grand entry featuring a timber monorail staircase, reaching up into the first-floor void creating an open and spacious feel. This home is complete with four bedrooms, three bathrooms, two living areas, a double garage and generous alfresco that is designed for entertaining. The raised ceiling above the meals area enhances the ground floor living and kitchen spaces. This beautiful double storey design can be easily customised to suit smaller blocks and budgets whilst maintaining the internal house design and layout. The Savannah 23sq exhibits the same internal floor plan but by converting the double garage to a single garage and removing the side alfresco. This design will work on a 9.5m frontage.

The Savannah 30sq on display at our Leppington Living display village used predominately standard CSB Homes inclusions, with the following being some of the optional upgrades available.

UPGRADED INCLUSIONS

- ▶ Custom Façade
- ▶ 2.7m Ground floor ceiling height
- ▶ 2.6m First floor ceiling height
- ▶ Raised ceiling to meals area
- ▶ 20mm Caesarstone to kitchen bench tops
- ▶ 20mm Caesarstone bathroom bench tops
- ▶ Timber monorail staircase with glass handrail
- ▶ Raised ceiling above meals
- ▶ 900mm Appliances
- ▶ Freestanding bath
- ▶ Shower niches
- ▶ Ducted air conditioning
- ▶ Upgraded downlights package
- ▶ Dishwasher
- ▶ Water tap to fridge space
- ▶ Sink & Cabinetry to WIP
- ▶ Double stacker doors to alfresco
- ▶ Outdoor kitchen
- ▶ Floor to ceiling wall tiles to powder room
- ▶ Feature walls
- ▶ Laundry cabinetry fit out
- ▶ Double vanities
- ▶ Alarm system

Savannah Options



GROUND FLOOR LIVING	103.83M²
FIRST FLOOR LIVING	79.68M²
VOID	11.54M²
GARAGE	18.20M²
PORCH	3.27M²
TOTAL	216.52M²
SQUARES	23.35Q
OPTIONAL ALFRESCO	13.24M²

MINIMUM LAND DIMENSIONS

HOUSE DIMENSIONS 7.3 x 17.5

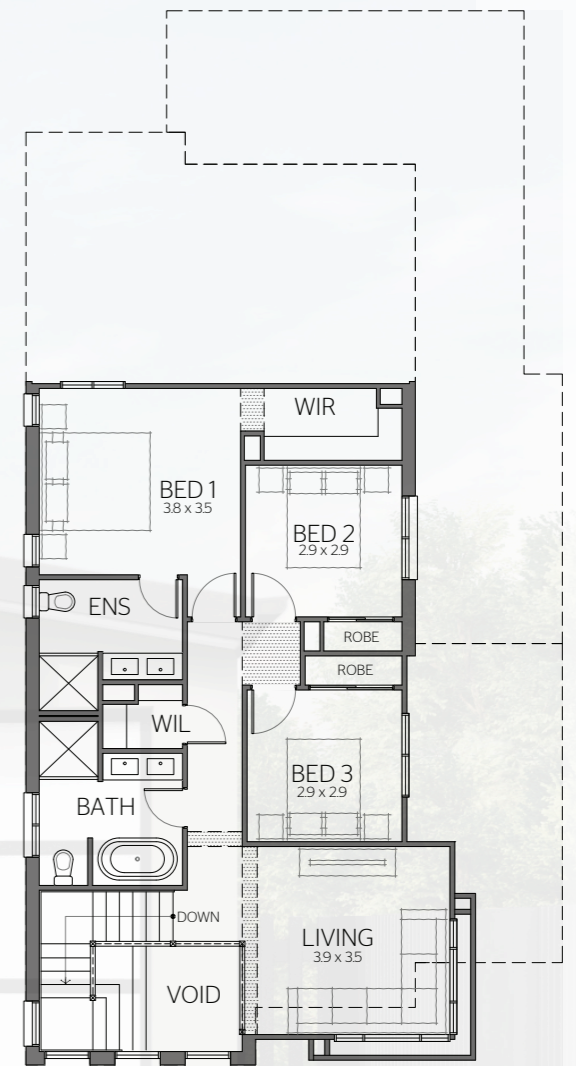
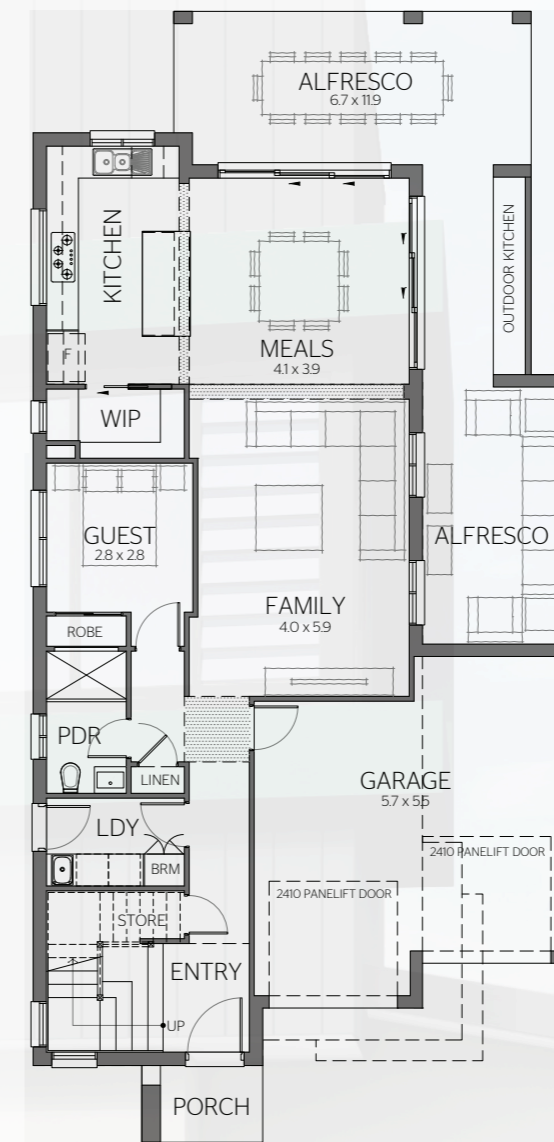
MINIMUM LAND DIMENSIONS 9.5m W x 27.0m D

ALFRESCO NOT PERMITTED

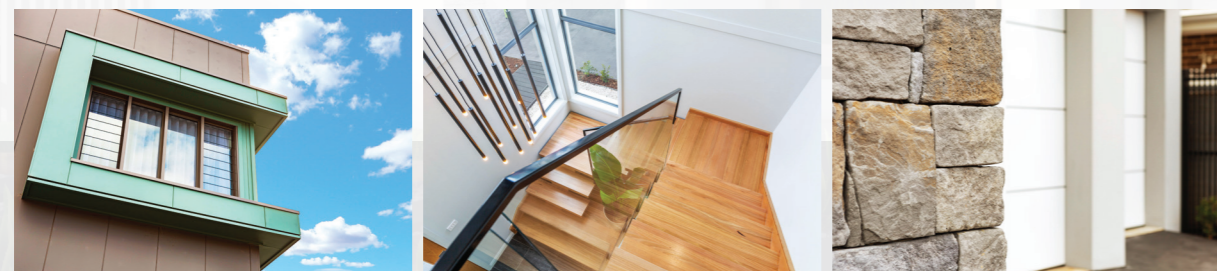
MINIMUM LAND DIMENSIONS 9.5m W x 28.0m D DA

ALFRESCO PERMITTED

LIVING	BED	BATH	CAR
2	4	3	1



GROUND FLOOR LIVING	103.83M²
FIRST FLOOR LIVING	86.53M²
VOID	7.72M²
GARAGE	34.87M²
ALFRESCO	41.11M²
PORCH	3.27M²
TOTAL	277.33M²
SQUARES	30.05Q



MINIMUM LAND DIMENSIONS

HOUSE DIMENSIONS 10.1 x 17.5

MINIMUM LAND DIMENSIONS 11.2m W x 27.5m D GREENFIELD CODE

MINIMUM LAND DIMENSIONS 12.5m W x 28.5m D DA WITHOUT BALCONY

MINIMUM LAND DIMENSIONS 11.2m W x 28.5m D DA WITH BALCONY

LIVING	BED	BATH	CAR
2	4	3	2

This drawing is copyright and remains the property of CSB (NSW) Pty. Ltd. Reproduction copying or use in part or whole without written permission from CSB (NSW) Pty. Ltd. is strictly prohibited. Action will be taken against offenders. CSB (NSW) Pty. Ltd. takes no responsibility in any design similarities that may have occurred. Dimensions, pictures and photos are for illustration purposes only.