

House & Land Packages

Lot 16, Aroona Avenue,
AUSTRAL

\$977,800

PACKAGE INCLUSIONS

- ▶ Contemporary Facade Included
- ▶ Upgraded Site Cost Allowance
- ▶ 2.6m Ground Floor Ceiling Height
- ▶ Ducted Air Conditioning
- ▶ 600mm Westinghouse Appliances
- ▶ 20mm Caesarstone Kitchen Benchtops
- ▶ Soft Close Doors/Drawers to Standard Kitchen Plan
- ▶ Bathroom Wall Tiling to 1.2m High
- ▶ Free Standing Bathtub
- ▶ Frameless (Polished Edge) Vanity Mirrors
- ▶ Upgraded Downlights Package
- ▶ Security Alarm System
- ▶ Sliding Mirror Robe Doors to Robes
- ▶ Panel Lift Garage Door
- ▶ Vertical Blinds
- ▶ Flyscreens to all Opening Windows
- ▶ Carpets to Bedrooms
- ▶ Tiling Living Areas
- ▶ Driveway
- ▶ Eave Vents & Whirly Birds
- ▶ Brick Letterbox (Bagged & Painted Finish)
- ▶ Upgraded BASIX Allowance Included
- ▶ Builder's agreed maintenance period - 90 days from practical completion
- ▶ NBN Pre-Wire (Builder's Provision)
- ▶ Custom design options available*
- ▶ Development application fees

Registration Imminent

Leppington Living Display Village
5 Twilight Street, Leppington 2179

Austral House & Land Sales Office
315 Fifteenth Avenue, Austral 2179

0458 50 60 70 | (02) 9608 3333
sales@csbhomes.com.au



*Terms and Conditions Apply. The information and package pricing is correct at the time of publication 01/01/2025 but subject to change without notice. All designs are subject to copyright. The images depicted in this advertisement are for illustrative purposes only and incorporate upgraded façade features, landscaping and other decorative items which are not included in the Advertised price, incorporates CSB Homes' standard site costs only and may vary subject to site survey; site specific conditions; planning and authority controls; and developer guidelines or requirements.

**FREE
SOLAR PANEL
SYSTEM
INCLUDED**

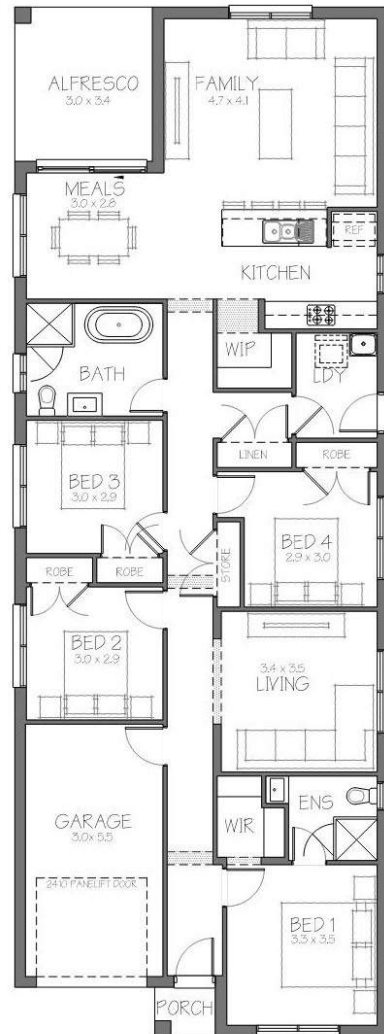


CSB Homes
foremost in quality since 1994
it's personal!



Alana 19.3 MKI

Façade priced on application



MINIMUM LAND DIMENSIONS		BED	BATH	CAR
HOUSE SIZE	19.3SQ	4	2	1
LAND SIZE	315M2			

www.csbhomes.com.au

House & Land Packages

Lot 16, Aroona Avenue,
AUSTRAL

\$977,800

Austral Highlights

- ▶ Close Proximity to M5 & M7 Motorways
- ▶ 7 minute drive to Leppington Station
- ▶ Surrounded by a selection of new schools
- ▶ 15 minutes from new Badgery's Creek Airport

The long-term value of a new home goes beyond the cost of its construction.

To find out more about the CSB Homes difference, scan the below QR code to go Behind the Build!



Behind the Build
CSB Homes



Leppington Living Display Village
5 Twilight Street, Leppington 2179

Austral House & Land Sales Office
315 Fifteenth Avenue, Austral 2179

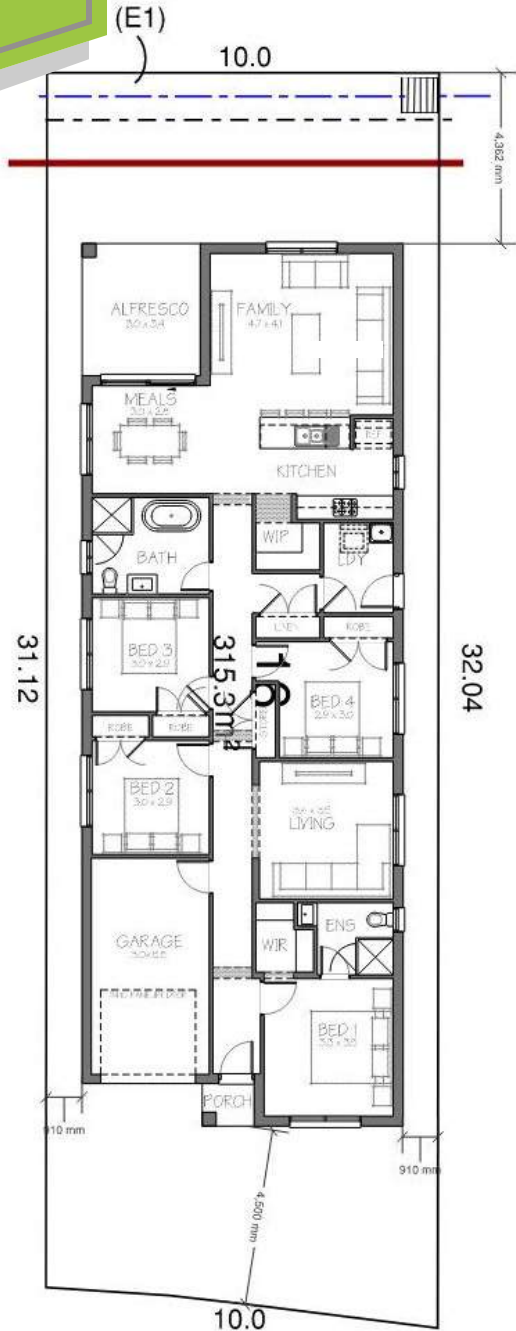
0458 50 60 70 | (02) 9608 3333
sales@csbhomes.com.au



*Terms and Conditions Apply. The information and package pricing is correct at the time of publication 01/01/2025 but subject to change without notice. All designs are subject to copyright. The images depicted in this advertisement are for illustrative purposes only and incorporate upgraded façade features, landscaping and other decorative items which are not included in the Advertised price, incorporates CSB Homes' standard site costs only and may vary subject to site survey; site specific conditions; planning and authority controls; and developer guidelines or requirements.

CSB Homes
it's personal!
CUSTOM DESIGN OPTIONS AVAILABLE

CSB Homes
foremost in quality since 1994
it's personal!



AROONA AVENUE

Registration Imminent

MINIMUM LAND DIMENSIONS		BED	BATH	CAR
HOUSE SIZE	19.3SQ	4	2	1
LAND SIZE	315M2			

www.csbhomes.com.au