

House & Land Packages

**FREE
SOLAR PANEL
SYSTEM
INCLUDED**



Lot 3 Twentieth Avenue
Hoxton Park ~~\$985,750~~
\$975,750**

PACKAGE INCLUSIONS

- ▶ Contemporary Facade Included
- ▶ Upgraded Site Cost Allowance
- ▶ Upgraded Ceiling Heights to 2.6m
- ▶ Ducted Air Conditioning
- ▶ 600mm Westinghouse Appliances
- ▶ 20mm Caesarstone Kitchen Benchtops
- ▶ Bathroom Wall Tiling to 1.2m high
- ▶ Free Standing Bathtub
- ▶ Upgraded Downlights Package
- ▶ Security Alarm System
- ▶ Frameless Vanity Mirrors
- ▶ Panel Lift Garage Door
- ▶ Vertical Blinds
- ▶ Flyscreens to all Opening Windows
- ▶ Carpets to Bedrooms
- ▶ Tiling Living Areas
- ▶ Driveway
- ▶ Upgraded BASIX Allowance Included
- ▶ Builder's agreed maintenance period
- 90 days from practical completion
- ▶ NBN Pre-Wire (Builder's Provision)
- ▶ Custom design options available*
- ▶ Development application fees

Registered Land

Leppington Living Display Village
5 Twilight Street, Leppington 2179

Austral House & Land Sales Office
315 Fifteenth Avenue, Austral 2179

0468 397 931 | (02) 9608 3333
sales@csbhomes.com.au



*The information and package pricing is correct at the time of publication 24/02/2025 but subject to change without notice. All designs are subject to copyright. The images depicted in this advertisement are for illustrative purposes only and incorporate upgraded façade features, landscaping and other decorative items which are not included in the Advertised price, incorporates CSB Homes' standard site costs only and may vary subject to site survey; site specific conditions; planning and authority controls; and developer guidelines or requirements.

** House & Land Package Discount promotion is only valid for building contracts entered into prior to 31st March 2025. Price listed on this brochure is the final package price, inclusive of the \$10,000 discount referenced on this and other related marketing material. Refer to one of our sales consultants for a full list of terms and conditions.



CLASSIC

Laila 15.4

Façade priced on application



	MINIMUM LAND DIMENSIONS	BED	BATH	CAR
HOUSE SIZE	15.4SQ	3	2	1
LAND SIZE	300M2			

www.csbhomes.com.au

House & Land Packages

CSB Homes
it's personal!
CUSTOM DESIGN OPTIONS AVAILABLE



Lot 3 Twentieth Avenue
 Hoxton Park ~~\$985,750~~
\$975,750**

Hoxton Park Highlights

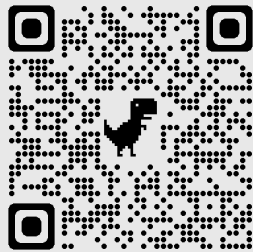
- ▶ Walking distance to Good Shepherd Primary School & Good Samaritan Catholic College
- ▶ Surrounded by an established community, including local shops and leading schools
- ▶ Close proximity to M7/M5 Motorways

The long-term value of a new home goes beyond the cost of its construction.

To find out more about the CSB Homes difference, scan the below QR code to go Behind the Build!



Behind the Build
CSB Homes



Leppington Living Display Village
 5 Twilight Street, Leppington 2179

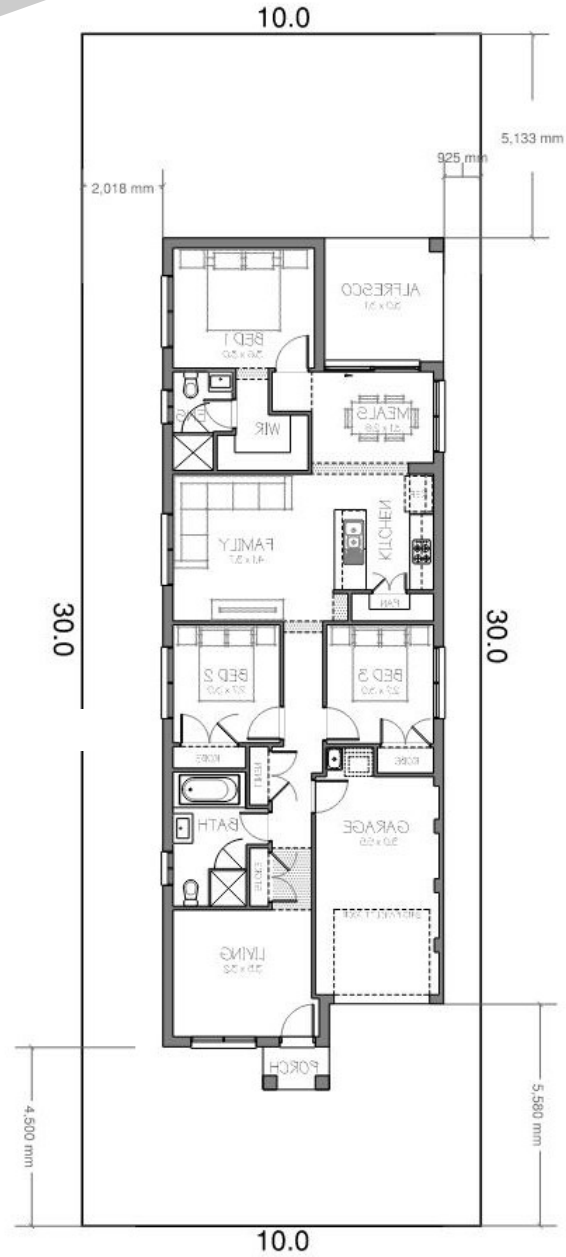
Austral House & Land Sales Office
 315 Fifteenth Avenue, Austral 2179

0468 397 931 | (02) 9608 3333
 sales@csbhomes.com.au



*The information and package pricing is correct at the time of publication 24/02/2025 but subject to change without notice. All designs are subject to copyright. The images depicted in this advertisement are for illustrative purposes only and incorporate upgraded façade features, landscaping and other decorative items which are not included in the Advertised price, incorporates CSB Homes' standard site costs only and may vary subject to site survey; site specific conditions; planning and authority controls; and developer guidelines or requirements.

** House & Land Package Discount promotion is only valid for building contracts entered into prior to 31st March 2025. Price listed on this brochure is the final package price, inclusive of the \$10,000 discount referenced on this and other related marketing material. Refer to one of our sales consultants for a full list of terms and conditions.



TWENTIETH AVENUE

Registered Land

MINIMUM LAND DIMENSIONS	BED	BATH	CAR
HOUSE SIZE 15.4SQ	3	2	1
LAND SIZE 300M2			

www.csbhomes.com.au