

House & Land Packages

Lot 196 Hulls Road,
LEPPINGTON ~~\$1,154,880~~

\$1,144,880**

PACKAGE INCLUSIONS

- ▶ Modern Facade Included
- ▶ Upgraded Site Cost Allowance
- ▶ Ground Floor Ceiling Height to 2.6m
- ▶ Ducted Air Conditioning
- ▶ 600mm Westinghouse Appliances
- ▶ Bathroom Wall Tiling to 1.2m High
- ▶ 20mm Kitchen Benchtop Upgrade Allowance
- ▶ Free Standing Bathtub
- ▶ Upgraded Downlights Package
- ▶ Security Alarm System
- ▶ Panel Lift Garage Door
- ▶ Vertical Blinds
- ▶ Flyscreens to all Opening Windows
- ▶ Carpets to Bedrooms
- ▶ Tiling Living Areas
- ▶ Driveway
- ▶ Upgraded BASIX Allowance Included
- ▶ Builder's agreed maintenance period
- ▶ - 90 days from practical completion
- ▶ NBN Pre-Wire (Builder's Provision)
- ▶ Custom design options available*
- ▶ Development application fees

Registration Expected Q1 2026

Leppington Living Display Village
5 Twilight Street, Leppington 2179

Austral House & Land Sales Office
315 Fifteenth Avenue, Austral 2179

0468 397 931 | (02) 9608 3333
sales@csbhomes.com.au



*The information and package pricing is correct at the time of publication 29/08/2025 but subject to change without notice. All designs are subject to copyright. The images depicted in this advertisement are for illustrative purposes only and incorporate upgraded façade features, landscaping and other decorative items which are not included in the Advertised price, incorporates CSB Homes' standard site costs only and may vary subject to site survey; site specific conditions; planning and authority controls; and developer guidelines or requirements.

** House & Land Package Discount promotion is only valid for building contracts entered into prior to 31st August 2025. Price listed on this brochure is the final package price, inclusive of the \$10,000 discount referenced on this and other related marketing material. Refer to one of our sales consultants for a full list of terms and conditions.

**FREE
SOLAR PANEL
SYSTEM
INCLUDED**



CSB Homes
foremost in quality since 1994
it's personal!



Custom Lara 22.0

Façade priced on application



MINIMUM LAND DIMENSIONS

HOUSE SIZE 21.85SQ
LAND SIZE 300M2

BED

3

BATH

2.5

CAR

2

www.csbhomes.com.au

House & Land Packages

Lot 196 Hulls Road,
LEPPINGTON ~~\$1,154,880~~

\$1,144,880**

Leppington Highlights

- ▶ Close Proximity to local shops & parks
- ▶ 5 minute drive to Leppington Station
- ▶ Surrounded by a selection of new schools
- ▶ 20 minutes from new Badgery's Creek Airport

The long-term value of a new home goes beyond the cost of it's construction.

To find out more about the CSB Homes difference, scan the below QR code to go Behind the Build!



Behind the Build
CSB Homes



Leppington Living Display Village
5 Twilight Street, Leppington 2179

Austral House & Land Sales Office
315 Fifteenth Avenue, Austral 2179

0468 397 931 | (02) 9608 3333
sales@csbhomes.com.au

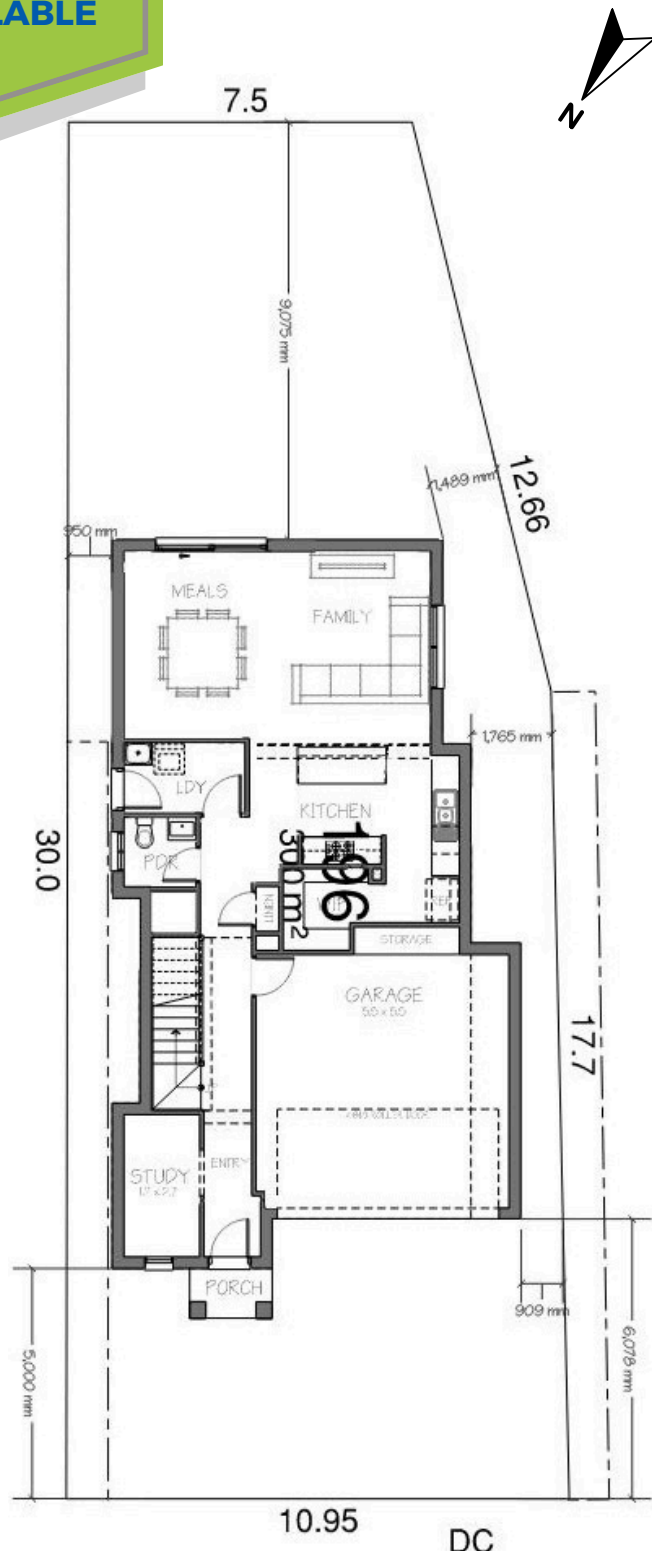


*The information and package pricing is correct at the time of publication 29/08/2025 but subject to change without notice. All designs are subject to copyright. The images depicted in this advertisement are for illustrative purposes only and incorporate upgraded façade features, landscaping and other decorative items which are not included in the Advertised price, incorporates CSB Homes' standard site costs only and may vary subject to site survey; site specific conditions; planning and authority controls; and developer guidelines or requirements.

** House & Land Package Discount promotion is only valid for building contracts entered into prior to 31st August 2025. Price listed on this brochure is the final package price, inclusive of the \$10,000 discount referenced on this and other related marketing material. Refer to one of our sales consultants for a full list of terms and conditions.

CSB Homes
foremost in quality since 1994
it's personal!
**CUSTOM
DESIGN
OPTIONS
AVAILABLE**

CSB Homes
foremost in quality since 1994
it's personal!



Registration Expected Q1 2026

MINIMUM LAND DIMENSIONS		BED	BATH	CAR
HOUSE SIZE	21.85SQ	3	2.5	2
LAND SIZE	300M2			

www.csbhomes.com.au